

---

# POLKADOTS SOFTWARE

## NEWSflo 2008 Technical Primer

---

### *GETTING STARTED WITH NEWSFLO*



# Table of Contents

---

<b>OVERVIEW.....</b>	<b>3</b>
<b>NEWSFLO BASIC FACTS.....</b>	<b>4</b>
NEWSFLO 2008: MAIN MODULES.....	4
INSTALLATION.....	4
NEWSflo Installer.....	4
Suggested Requirements.....	5
Services.....	6
ABOUT NEWSFLO.....	6
WORKFLOW - MAIN STEPS.....	7
<b>PREPAGE-IT VIEWER.....</b>	<b>8</b>
PREPAGE-IT BASICS.....	8
Pre-configured NEWSflo queues.....	8
View progress of jobs.....	8
Harlequin RIP embedded.....	9
PrePage-it toolbar.....	9
PrePage-it Printers.....	9
Spot Colors List.....	10
QUEUE CONFIGURATION.....	11
Preflight.....	11
Generation of hi-res/med-res/low-res.....	12
Inputs and outputs.....	14
PREPAGE-IT TOOLS.....	15
Preferences.....	16
Event Log.....	16
Reset.....	17
<b>RASTERIZE-IT.....</b>	<b>18</b>
<b>PREPAGE-IT CLIENT.....</b>	<b>21</b>
MODULE OVERVIEW.....	21
PREPAGE-IT CLIENT ENGINE (SERVER).....	21
PREPAGE-IT CLIENT.....	22
<i>What is it used for?</i> .....	22
<i>Client Installation</i> .....	28
PUBLICATION PLANNER / PAIR-IT MONITOR.....	29
<i>Publication Planner</i> .....	29
<i>Planner Templates</i> .....	30
<i>Pair-it Monitor</i> .....	31
Monitoring the page pairing.....	32
Pair-it Preference Sets.....	37
Specifying more options (e.g. Flop, Black Delay).....	38
4D LICENSES.....	39
<b>MOVE-IT.....</b>	<b>40</b>

# Overview

---

The *NEWSflo 2008 Technical Primer* is an initiation to NEWSflo for technical personnel who will be installing, configuring or troubleshooting the software. It provides an introductory overview and can be used for training purposes or as a technical reference for those new to Polkadots' software applications.


It is recommended to first read the *NEWSflo 2008 Operator QuickStart* to get an overview of how to work with NEWSflo from a non-technical operator's point of view.

More detailed explanations of the NEWSflo software modules can be found in their respective user guides, such as the *Publication Planner User Guide*, *PrePage-it User Guide*, *Move-it User Guide*, etc. These documents are available from your *Polkadots Software* dealer.


# NEWSflo Basic Facts

---

## NEWSflo 2008: Main modules

 Rasterize-it → ***Embedded RIP***

 PrePage-it Viewer → ***Workflow Server***

 PrePage-it Clients (Mac or PC) → ***Operator Interface (for Job Management)***

 Move-it → ***Workflow Automation***

## Installation

### NEWSflo Installer

A single NEWSflo Installer installs all software modules and does some pre-configuration.



Pre-configuration includes → *PrePage-it queues, Client setup, Pair-it Preference Set.*

## Suggested Requirements

NEWSflo Server – Suggested Requirements	
Component	Suggested requirement
<b>Processor</b>	Dual Xeon 3.0+ GHz
<b>Operating System</b>	Windows 2003 Server 32-bit Standard
<b>Memory</b>	3-4 GB RAM
<b>Hard Drive(s)</b>	<ul style="list-style-type: none"> <li>- 30 GB internal drive for OS and applications</li> <li>- 30 GB internal disk for workspace</li> <li>- 250+ GB hard disk with SCSI controller for RIPped files</li> </ul>
<b>RIP</b>	Rasterize-it v7.2r1 or v8.x

***PrePage-it Client requirement:*** Mac OS (minimum 10.2.8) ***or*** Windows XP Pro/2003

## Important

Windows Vista and 64-bit Windows operating systems are not supported.

## Services

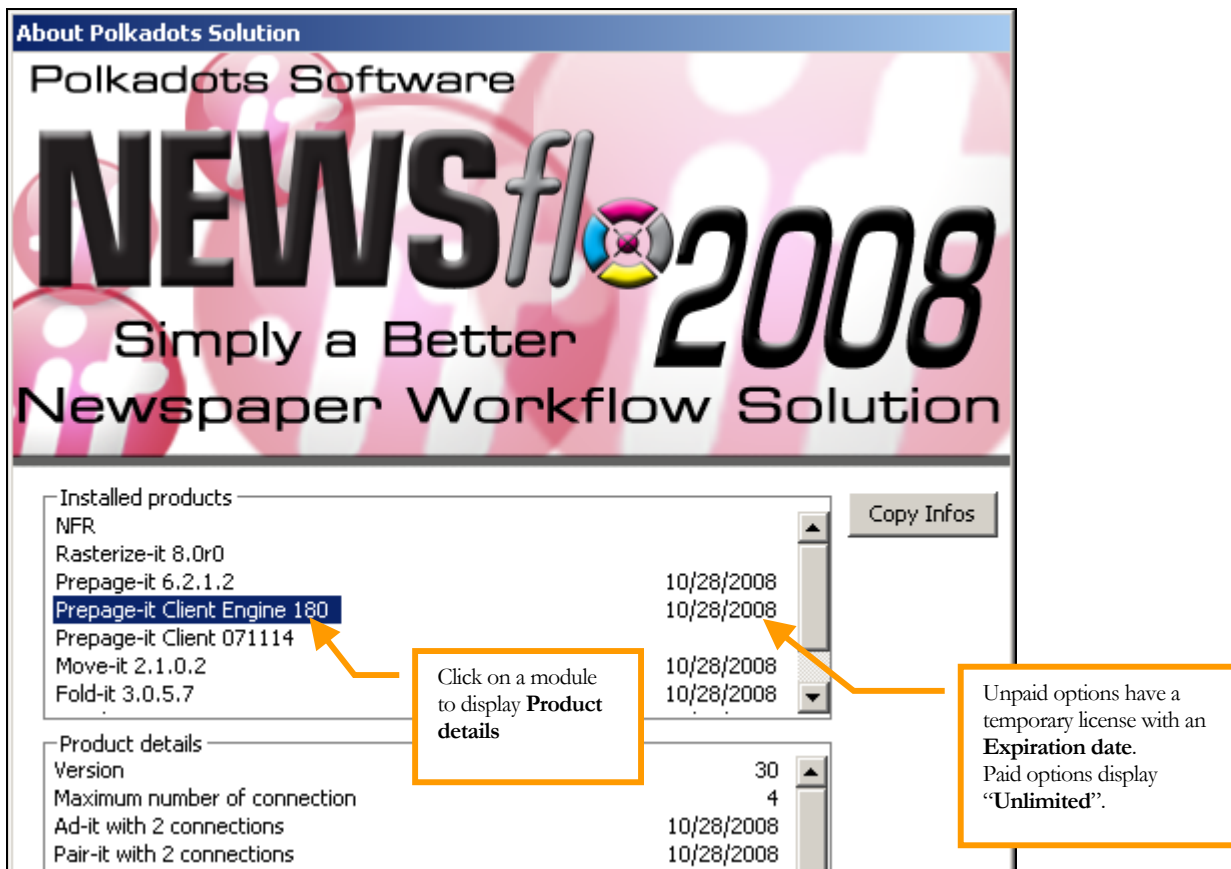
NEWSflo installs several services:

Name ▲	Description	Status	Startup Type	Log On As
→ 4D Server: Prepage-it Client	Prepage-it Client Engine 5.1 Service	Started	Automatic	.\PPIT
→ Alerter	Notifies selected users and computers o...		Disabled	Local Service
→ IPSEC Services	Manages IP security policy and starts th...	Started	Automatic	Local System
→ Late BindingV5 Stitching Service	Polkadots Service		Manual	Local System
→ Logical Disk Manager	Detects and monitors new hard disk driv...		Manual	Local System
→ Logical Disk Manager Administrati...	Configures hard disk drives and volume...		Manual	Local System
→ Messenger	Transmits net send and Alerter service ...		Disabled	Local System
→ Move-it 2	Executes and manages Move-it 2's file ...	Started	Automatic	.\PPIT
→ MS Software Shadow Copy Provi...	Manages software-based volume shado...		Manual	Local System
→ Net Logon	Supports pass-through authentication o...		Manual	Local System
→ NetMeeting Remote Desktop Sha...	Enables an authorized user to access th...		Manual	Local System
→ Network Connections	Manages objects in the Network and Di...	Started	Manual	Local System
→ Network DDE	Provides network transport and securit...		Disabled	Local System
→ Network DDE DSDM	Manages Dynamic Data Exchange (DDE...		Disabled	Local System
→ Network Location Awareness (NLA)	Collects and stores network configurati...	Started	Manual	Local System
→ Network Provisioning Service	Manages XML configuration files on a do...		Manual	Local System
→ Norton AntiVirus Client		Started	Automatic	Local System
→ NT LM Security Support Provider	Provides security to remote procedure c...		Manual	Local System
→ Performance Logs and Alerts	Collects performance data from local or ...		Manual	Network S...
→ Plug and Play	Enables a computer to recognize and ad...	Started	Automatic	Local System
→ Portable Media Serial Number Ser...	Retrieves the serial number of any port...		Manual	Local System
→ Prepage-IT Load Balancing	Polkadots Service	Started	Automatic	Local System
→ Prepage-itV5 HotFolder	Polkadots Service		Manual	.\PPIT
→ Prepage-itV5 PrintFolder	Polkadots Service		Automatic	.\PPIT
→ Prepage-itV5 Resolve	Polkadots Service		Manual	.\PPIT

## About NEWSflo

Click **Start > Programs > Polkadots > About** to display the **About** window – this will display information about your NEWSflo installation:

- installed modules / versions
- dongle license facts



Going from “temporary” to “unlimited” software license requires you to activate a dongle update file sent to you by *Polkadots Software*.



## Workflow - Main Steps

The three main steps when working with NEWSflo are:

1. **Submitting Pages** (to be preflighted and RIPped).
2. **Planning the Publication** (determines how pages will be paired up).
3. **Monitoring and Output** (monitor to see when pairs are completed, then output them to CTP).

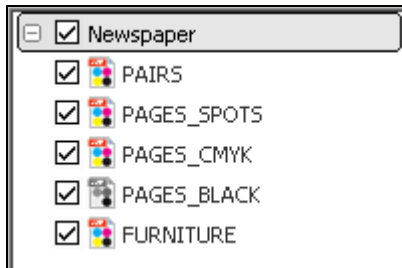
Refer to *NEWSflo Operator QuickStart* for an illustrated demo of these basic NEWSflo procedures.

# PrePage-it Viewer

---

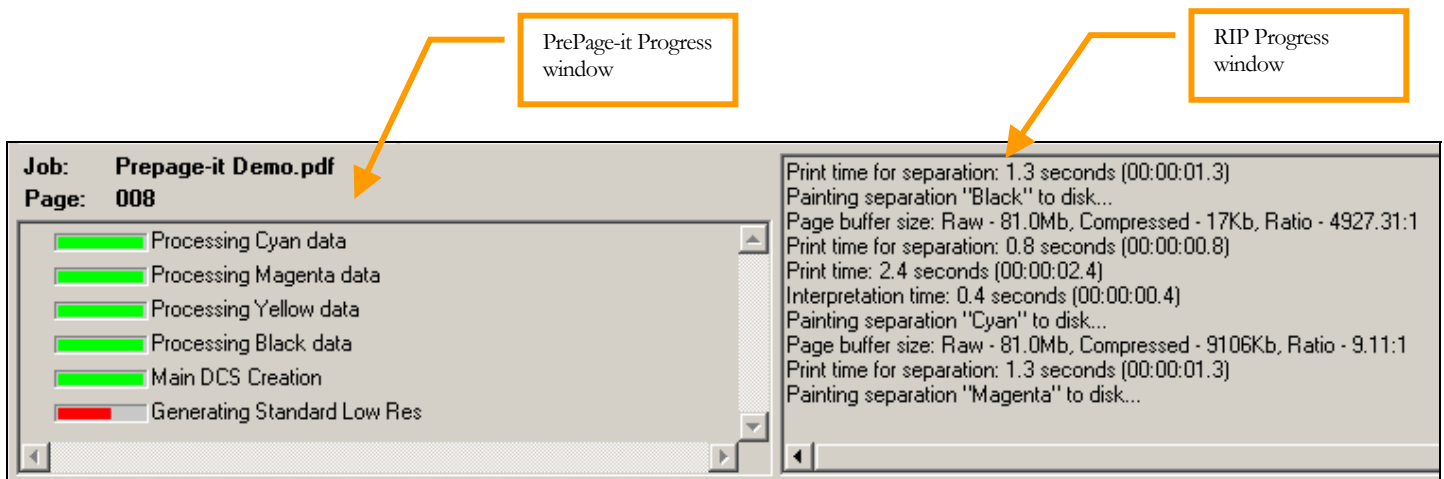
## PrePage-it Basics

Pre-configured NEWSflo queues



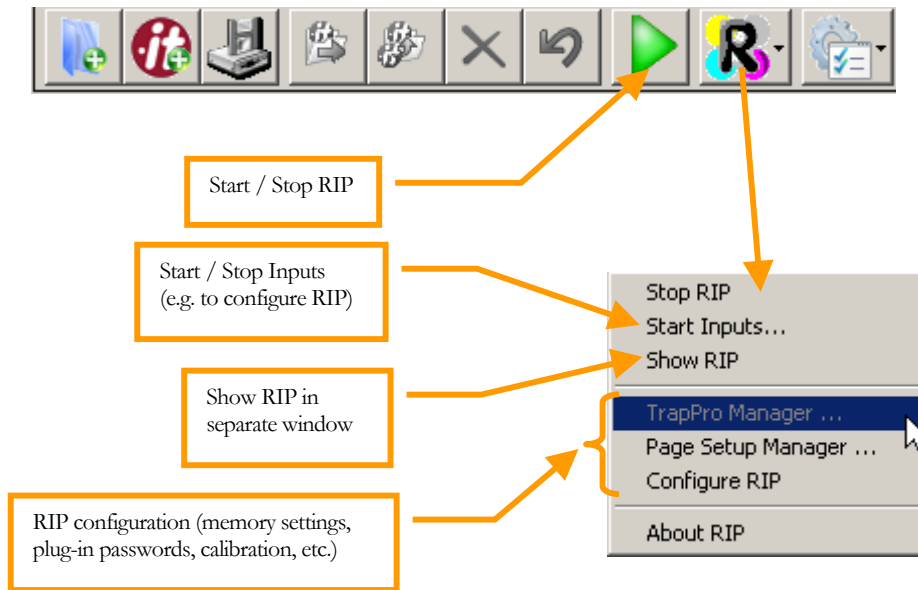
- PAGES\_BLACK / PAGES\_CMYK / PAGES\_SPOTS → preflighting and RIPping single-pages
- PAIRS → pairing up single-pages
- FURNITURE → generating furniture/marks

View progress of jobs

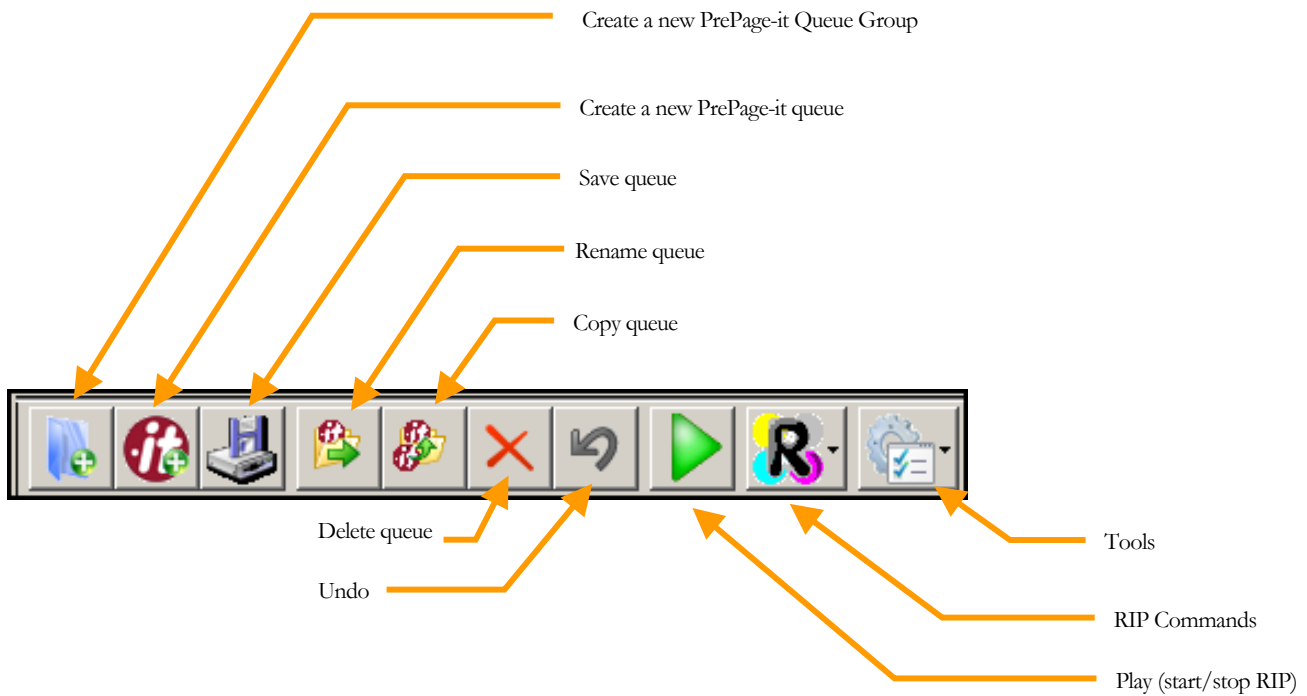




## Harlequin RIP embedded

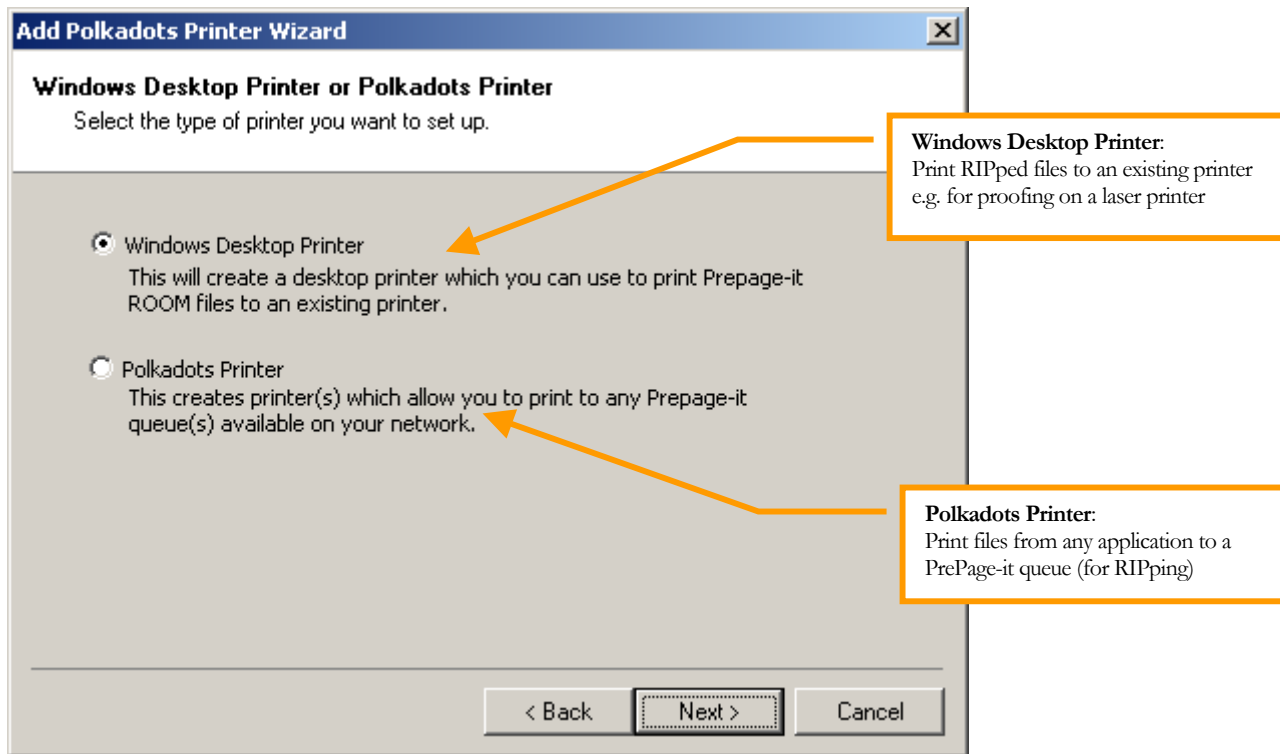


## PrePage-it toolbar



## PrePage-it Printers

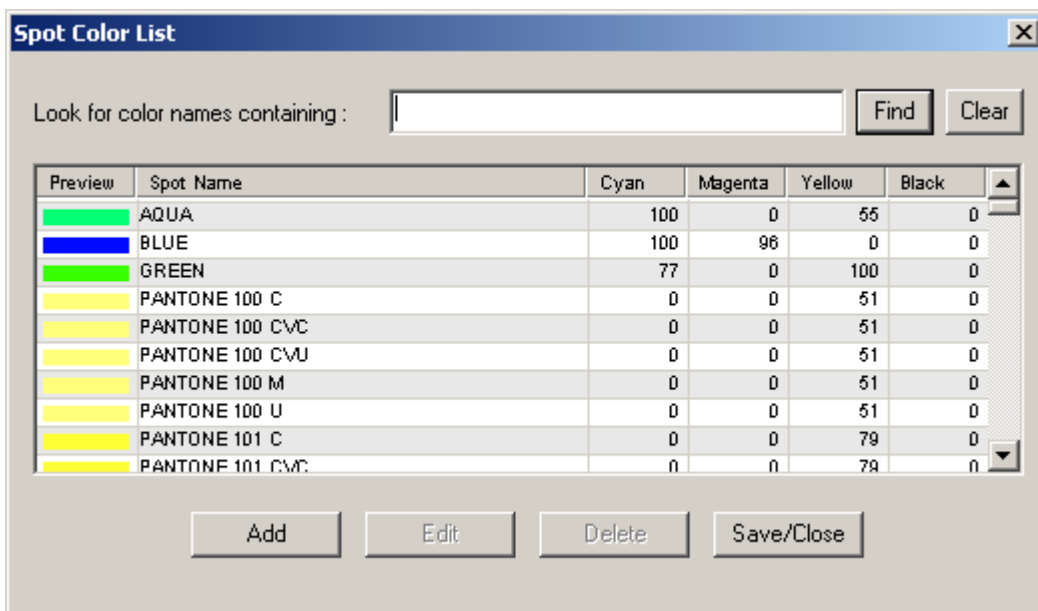
Click **Tools > Printer Manager**, then  to create 2 types of **PrePage-it Printers**.



### Spot Colors List

Click **Tools > Spot Colors List** to open PrePage-it's **Spot Colors List**:

- CMYK equivalent values for common Pantone and other spot colors
- PrePage-it uses this list for spot to CMYK conversion and also for proofing
- spot colors can be added and modified: manually (in the window below) and automatically (in the PrePage-it **Preferences**)

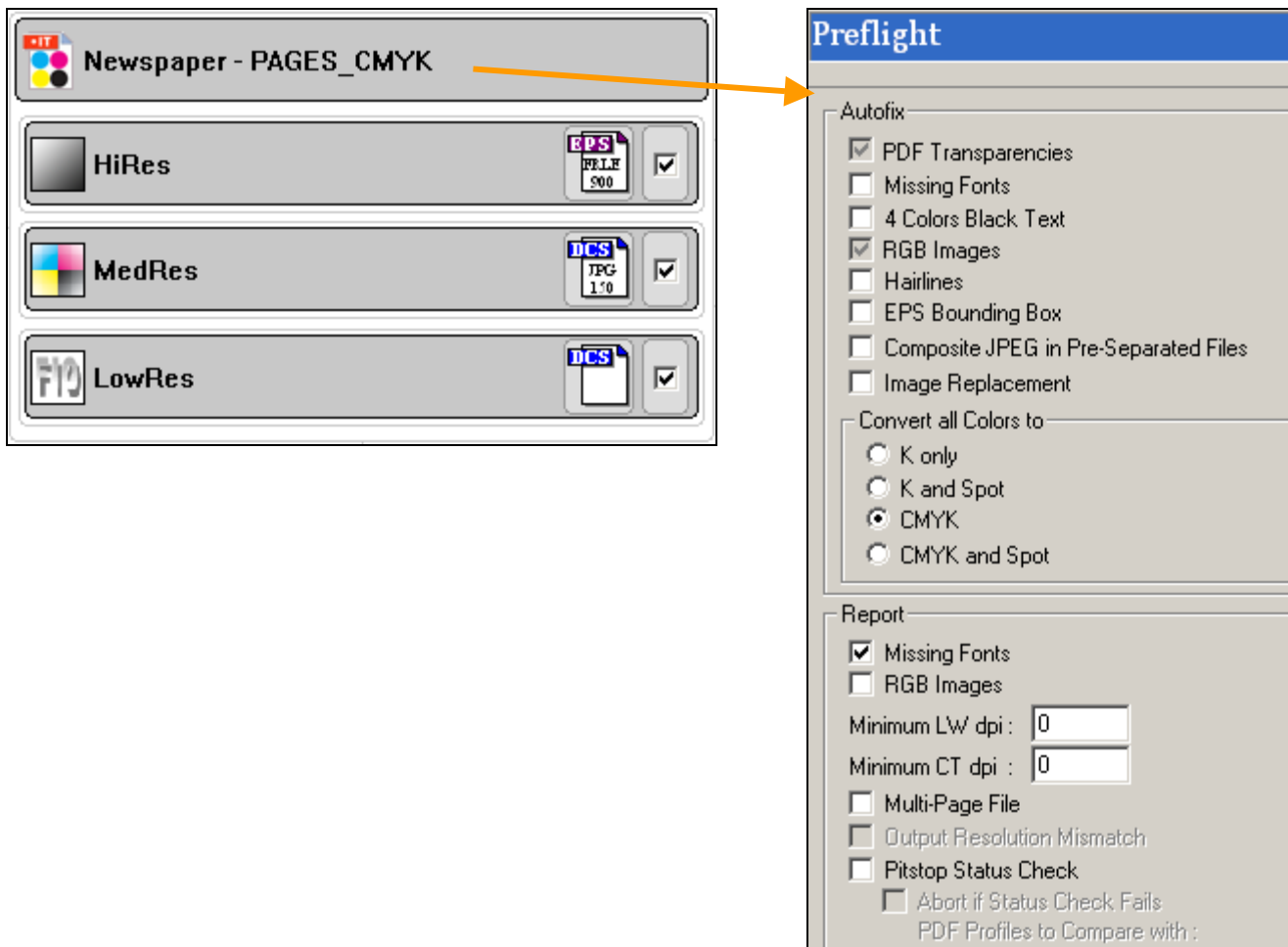


## Queue Configuration

Illustration of a typical PrePage-it Standard queue: PAGES\_CMYK (single-pages queue).

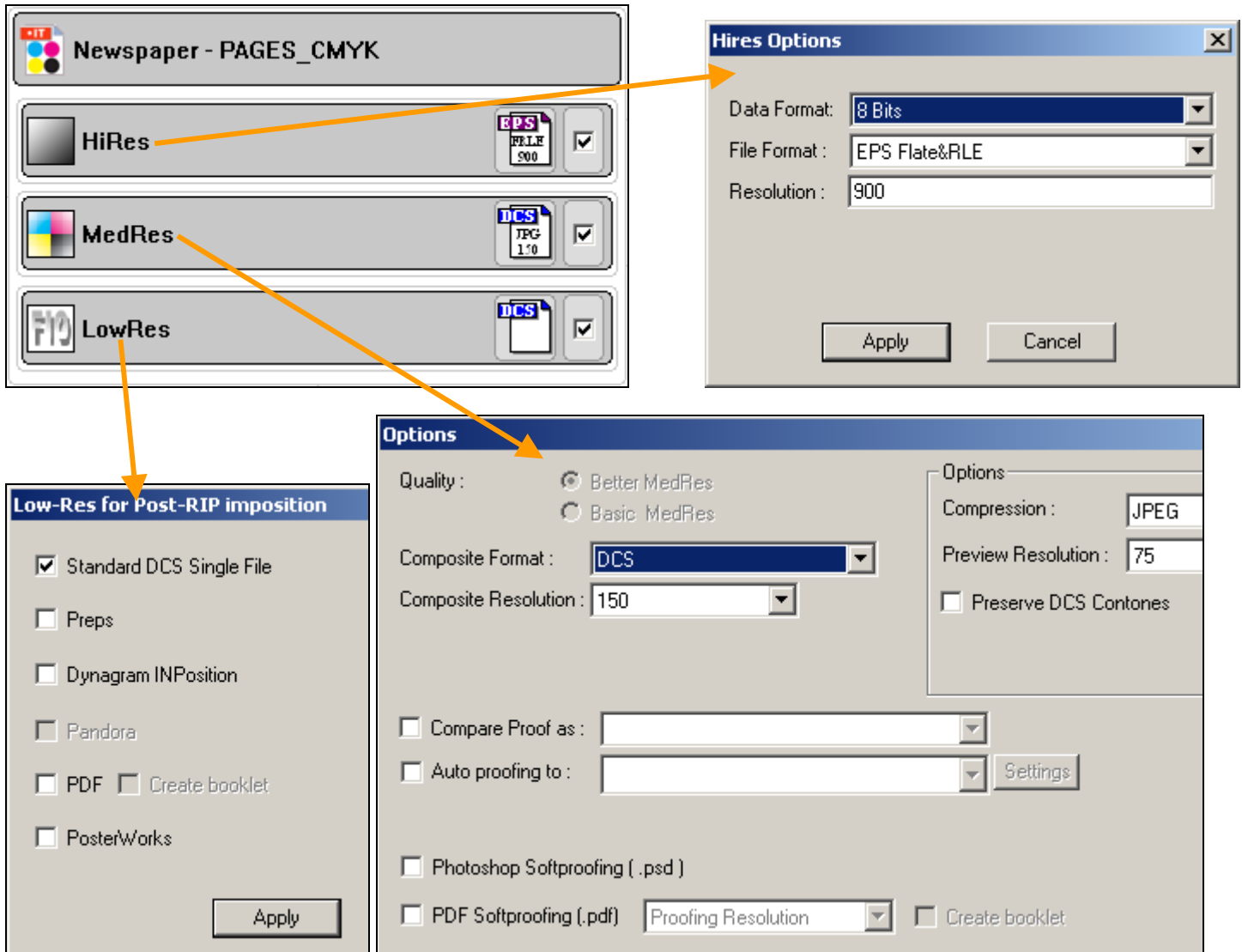
### Preflight

- PrePage-it generates preflighted, rasterized, contone single-pages.

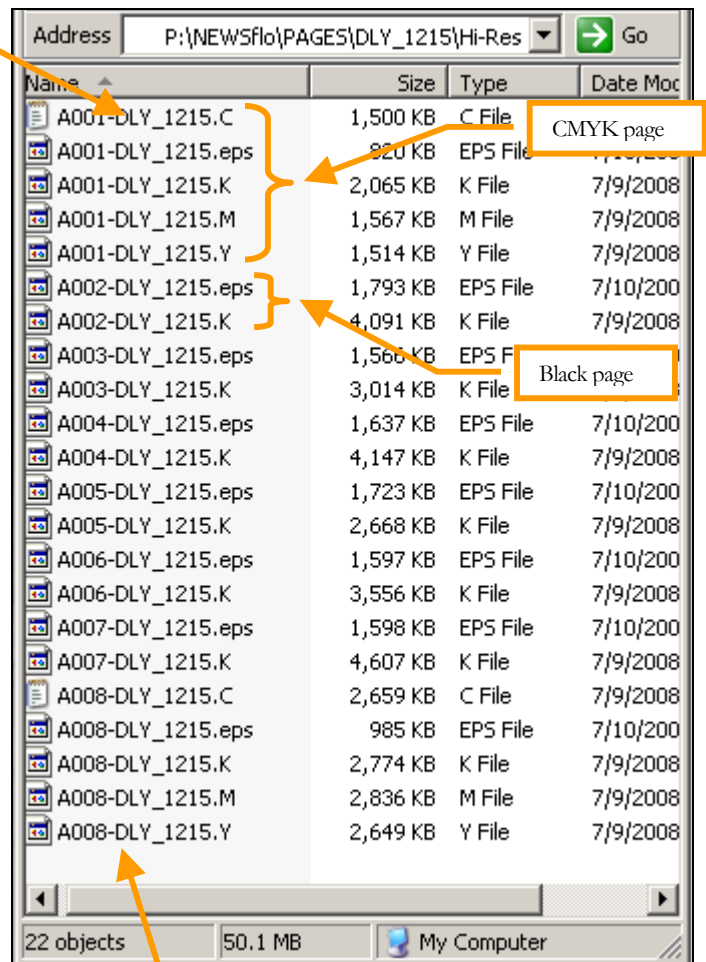
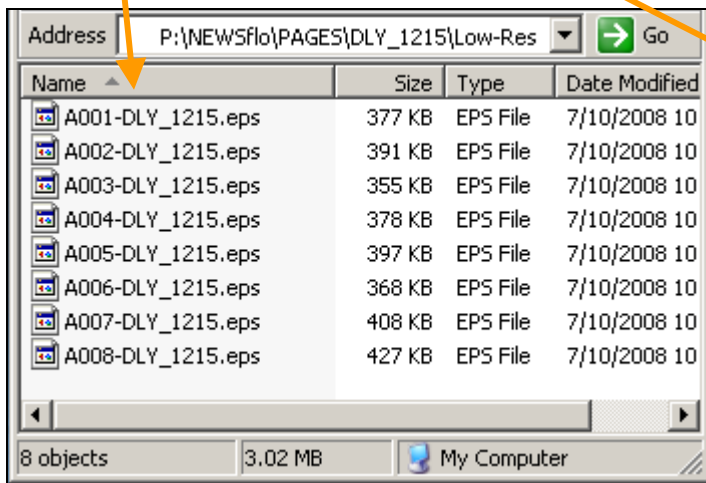
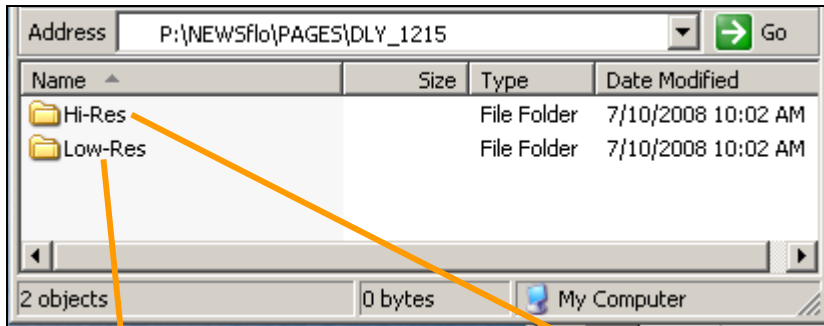


## Generation of hi-res/med-res/low-res

- Individual pages are secure and normalized (DCS 2.0 format). Each rasterized page includes:
  - high-res separations (for final output)
  - med-res (optional, for printed proofs)
  - low-res with OPI links (for imposition i.e. page pairing done by Pair-it)



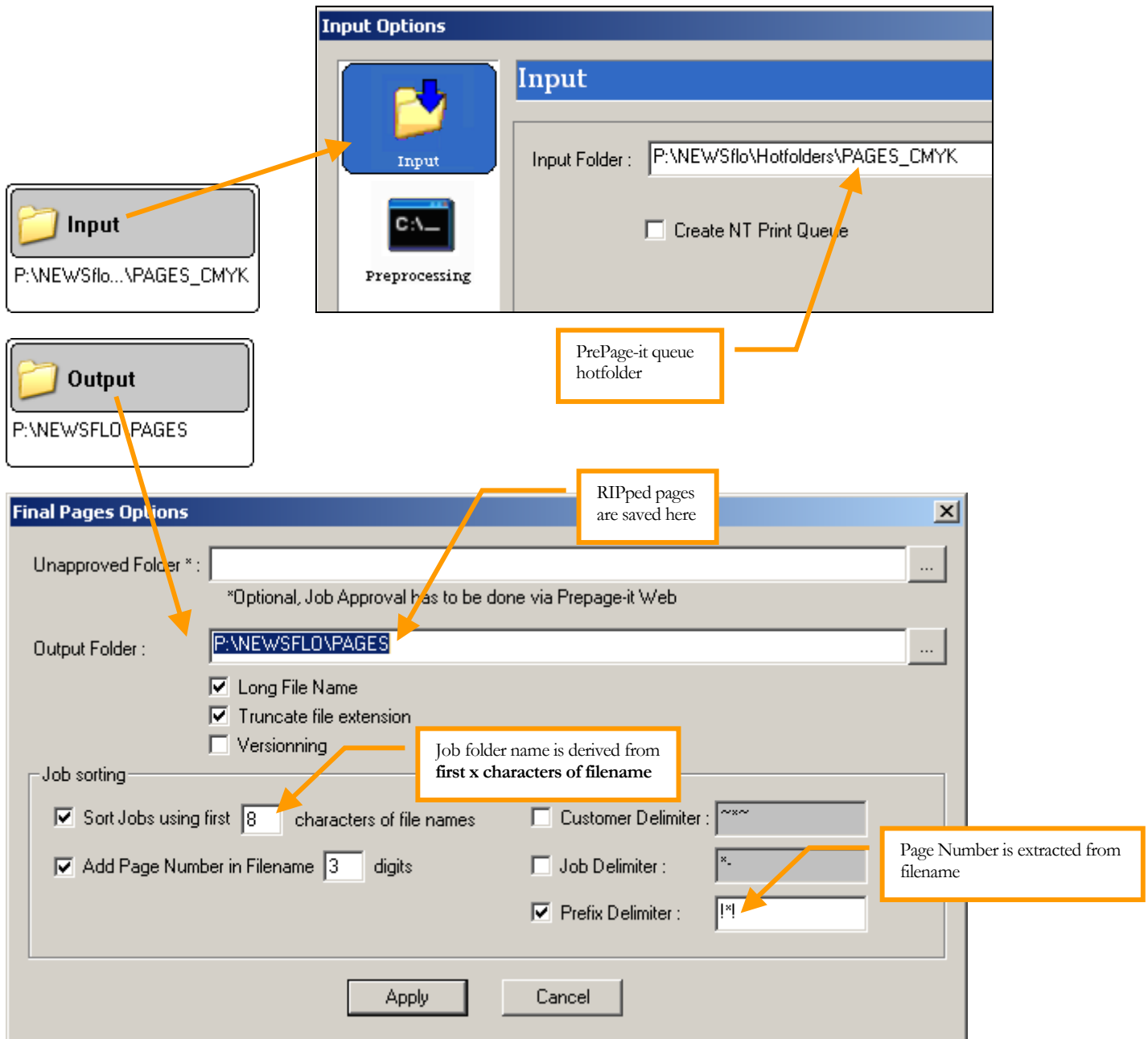
- RIPped jobs are organized by job folder - a typical 8-page job is shown below:
  - job folder → DLY\_1215
  - page numbers → A001-A008



Low-Res:  
DCS 2.0 –  
Single File

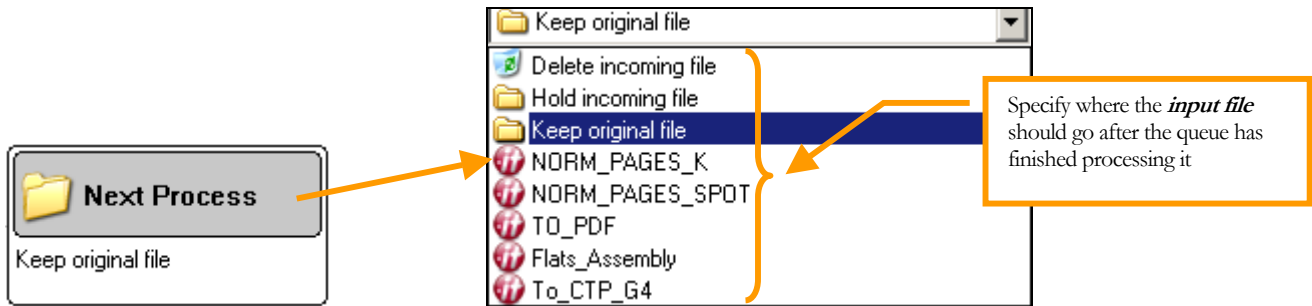
Hi-Res:  
DCS 2.0 –  
Multiple File

## Inputs and outputs



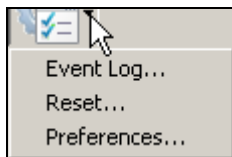
- PrePage-it will extract the page number from the filename when a **Prefix Delimiter** is activated:

Incoming page file	PrePage-it Queue setup	Page Number
NYP_0623!A01!.pdf	<input checked="" type="checkbox"/> Prefix Delimiter : <input type="text" value="!*"/>	A01
NYP_0623!A02!.pdf		A02

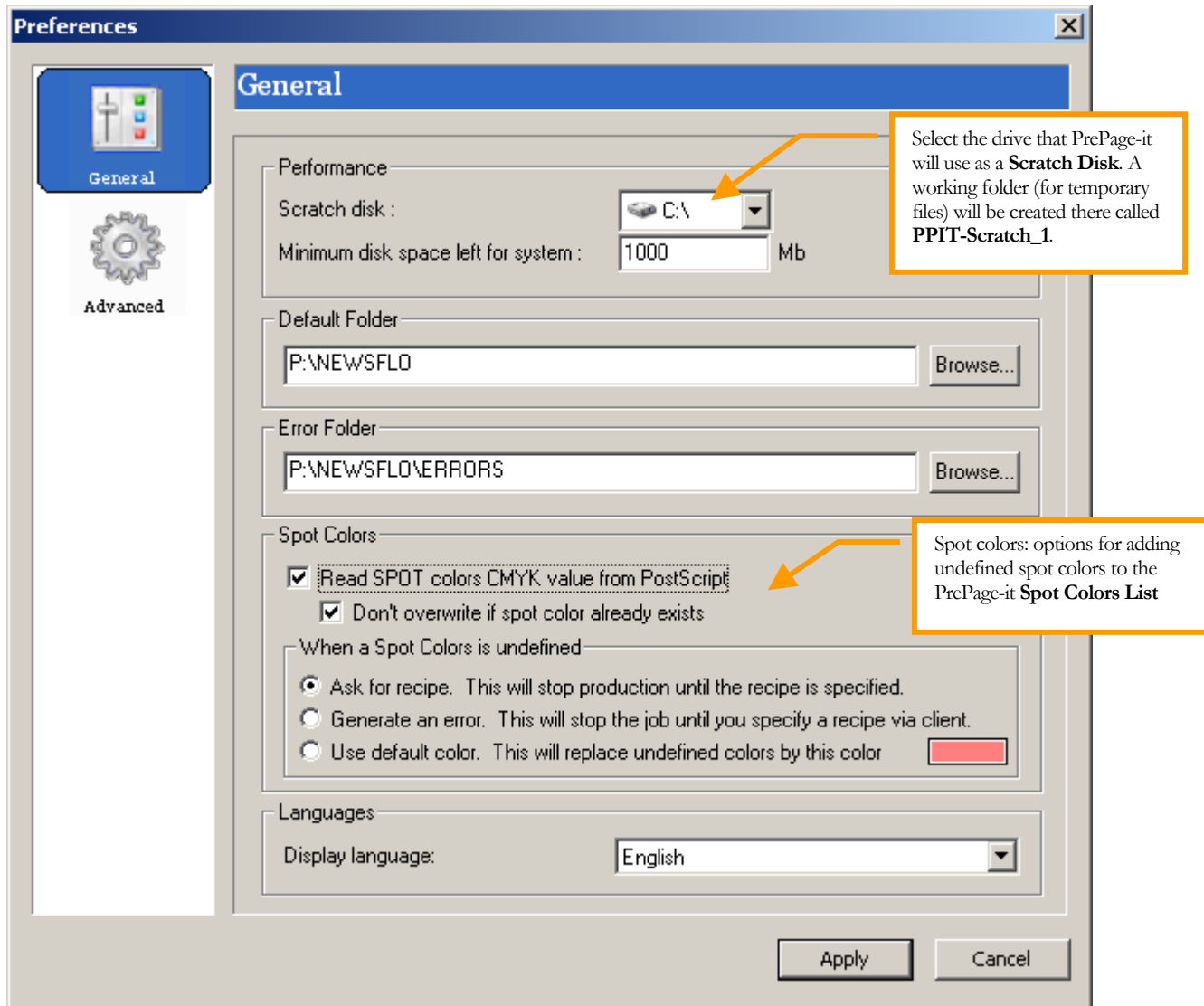


## PrePage-it Tools

Clicking the **Tools** toolbar button  gives you access for the following options:



## Preferences

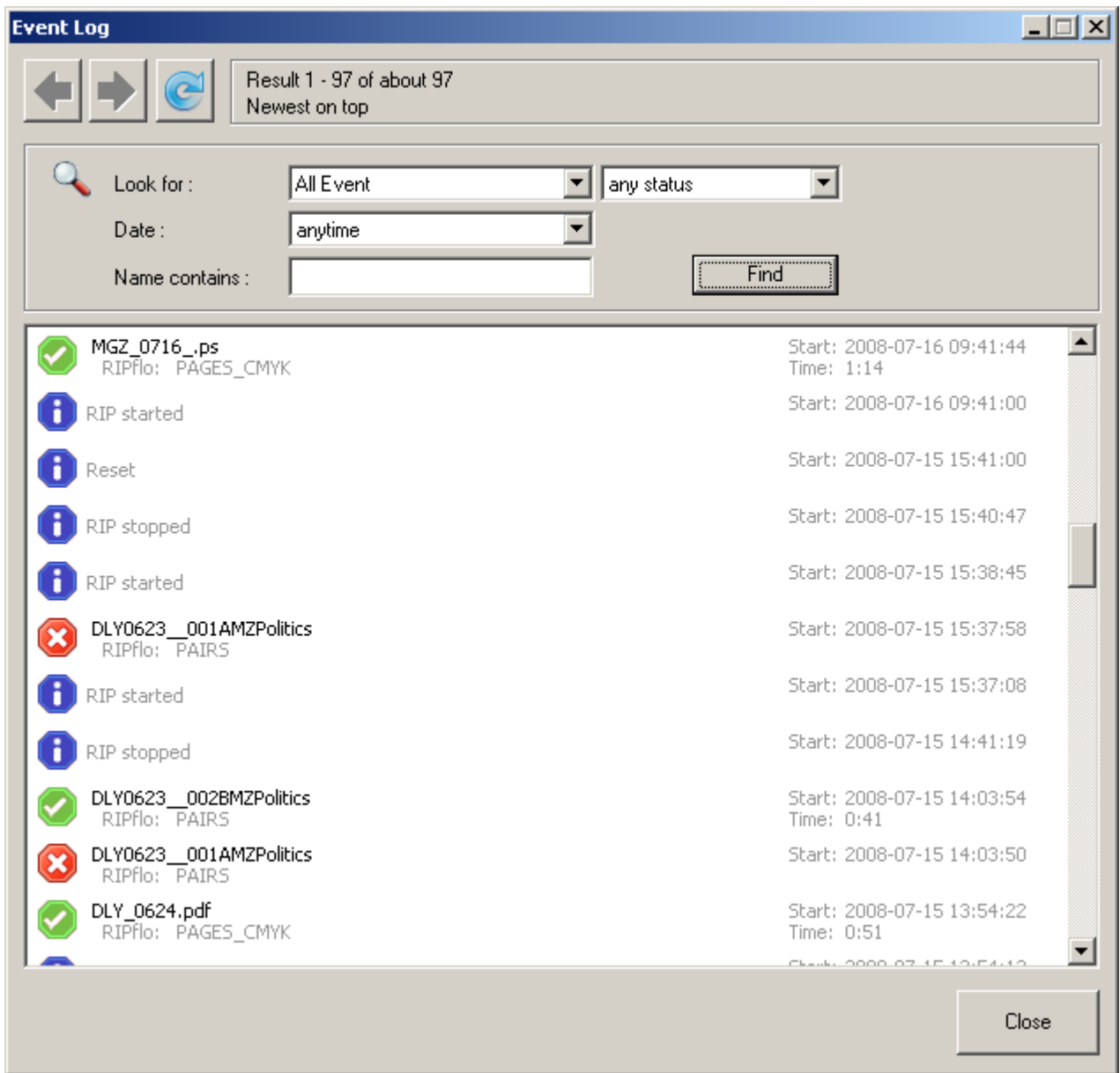


## Event Log

See list of PrePage-it events for troubleshooting purposes:

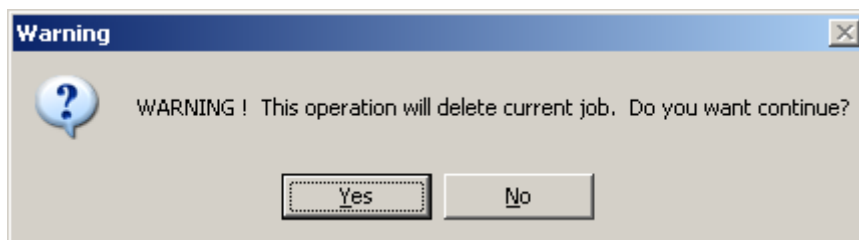
- double-click error messages  to see full message





## Reset

Reset PrePage-it when a job “gets stuck” (i.e. does not complete its processing cycle) and prevents new jobs from being processed. The current job will be flushed and will probably need to be re-submitted to PrePage-it.



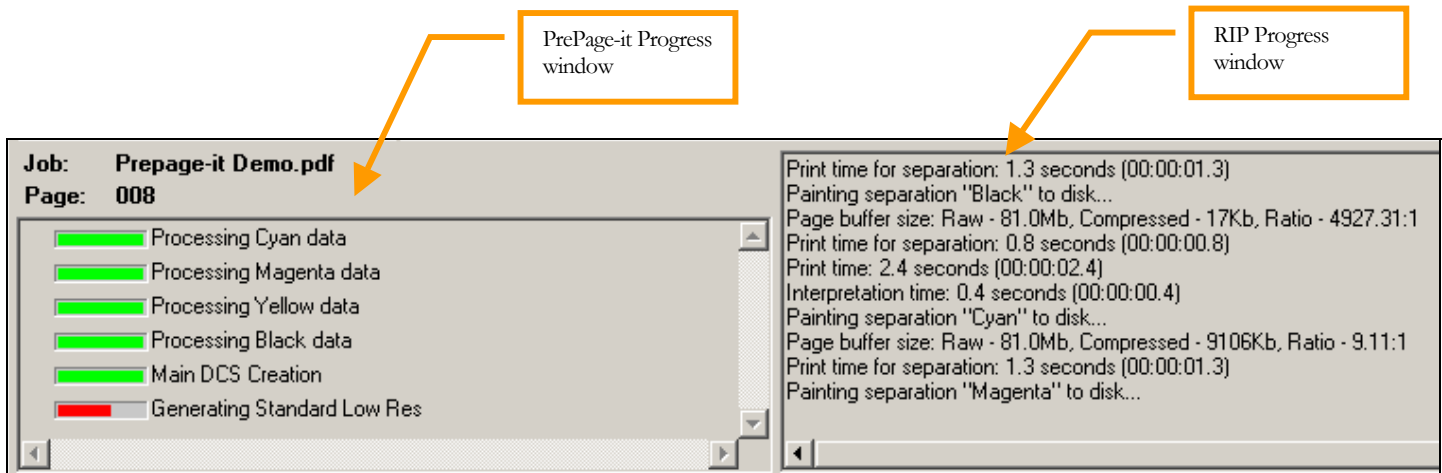
# Rasterize-it

- **Harlequin RIP** embedded into PrePage-it Workflow Viewer
- RIP must be started in order for PrePage-it to process jobs

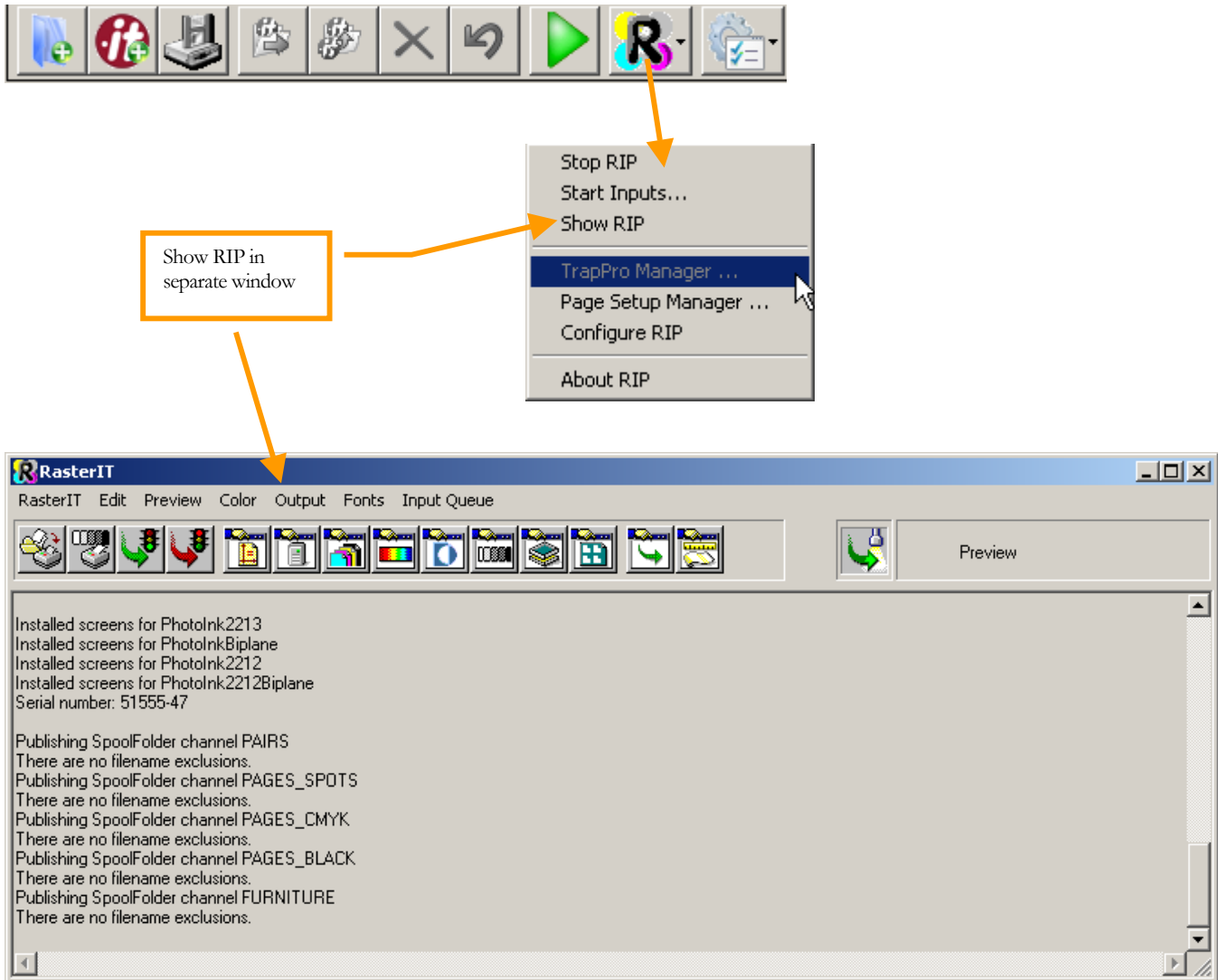


Start / Stop RIP

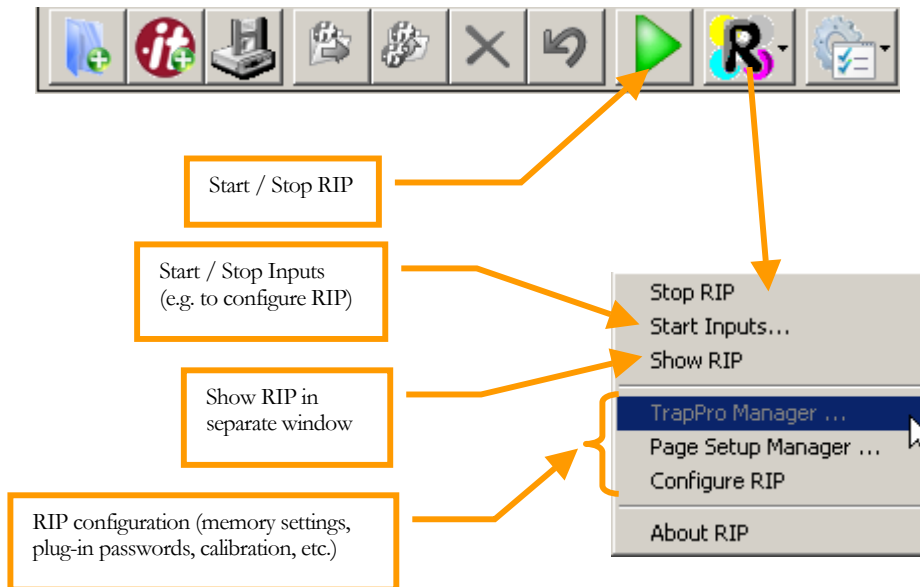
- progress of jobs being RIPped can be seen at bottom of Viewer window



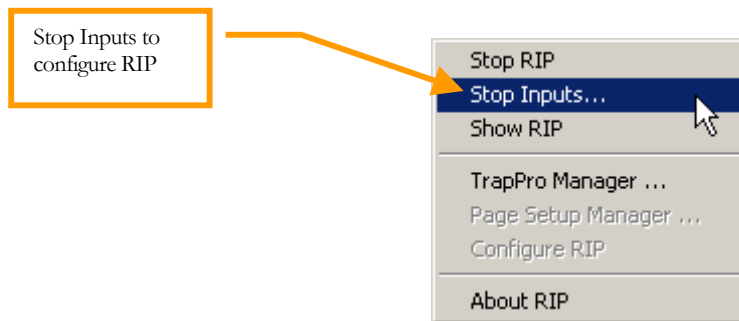
- you can display RIP in its own separate window by clicking the **Show RIP** menu command



- most RIP control and configuration can be done via PrePage-it Viewer interface



- in order to configure the RIP's **Page Setup Manager**, **Configure RIP** settings and **TrapPro Manager**, the **RIP Inputs** must be stopped



# PrePage-it Client

---

## Module Overview

“PrePage-it Client” is a server-client database-driven application containing the following modules:

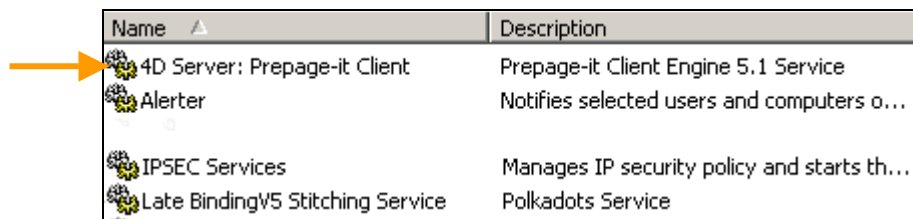
Server → PrePage-it Client Engine

Client(s) → PrePage-it Client (Mac or PC)

- Client includes View-it → **Softproofing**
- Client includes Publication Planner → **Defining Publications**
- Client includes Pair-it Monitor → **Monitoring and Output of paired pages**

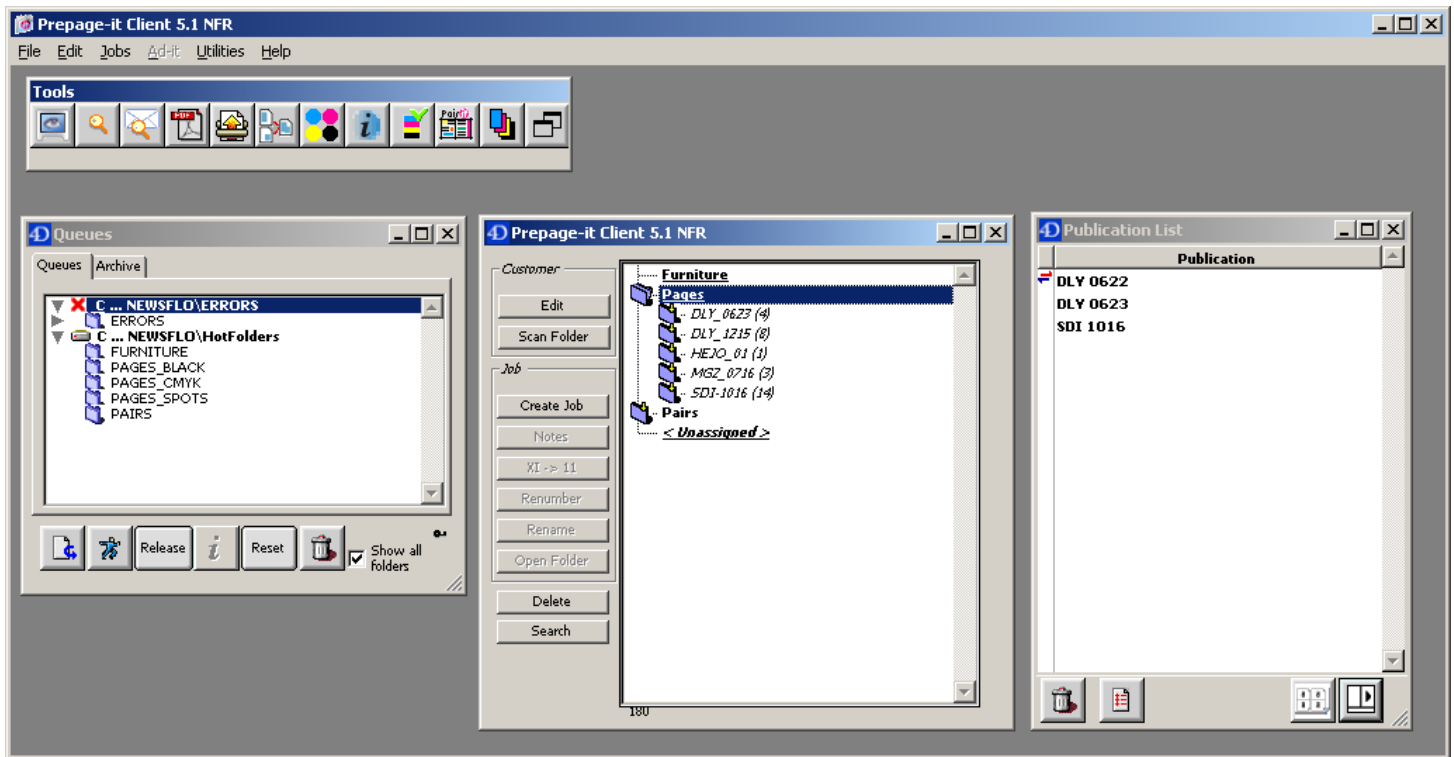
## PrePage-it Client Engine (Server)

- database-driven back-end application - has no interface
- is installed on *PC Server* by NEWSflo Installer – should not be installed on operator workstations (Mac or PC)
- runs as a service: 4D Server: Prepage-it Client



Name ▲	Description
4D Server: Prepage-it Client	Prepage-it Client Engine 5.1 Service
Alerter	Notifies selected users and computers o...
IPSEC Services	Manages IP security policy and starts th...
Late BindingV5 Stitching Service	Polkadots Service

# PrePage-it Client

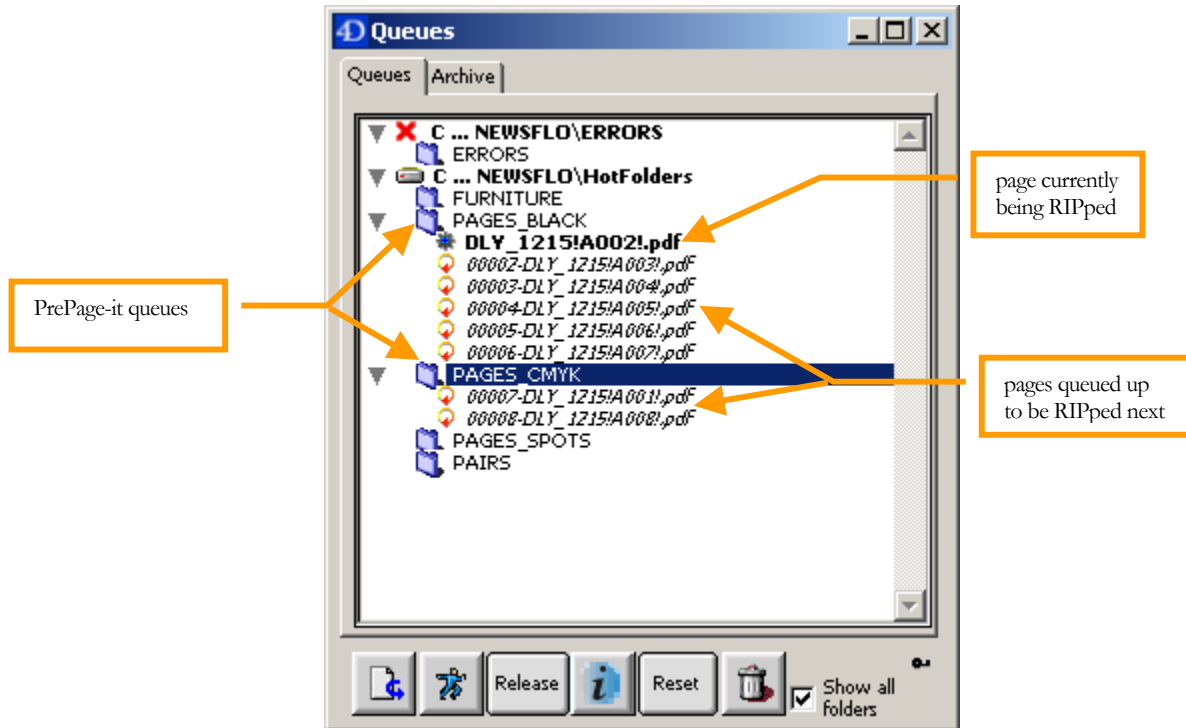


- can be installed and used on any Mac or PC
- 2 **Clients** can be used simultaneously - extra Client licenses can also be purchased

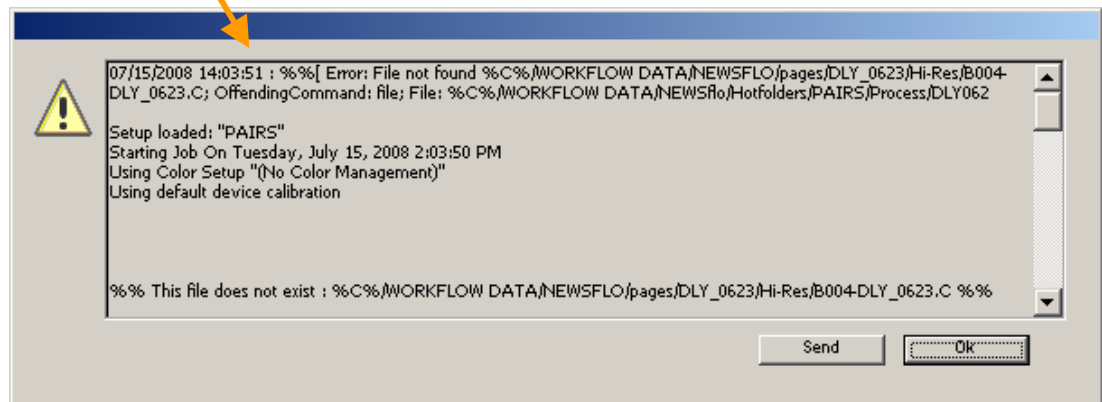
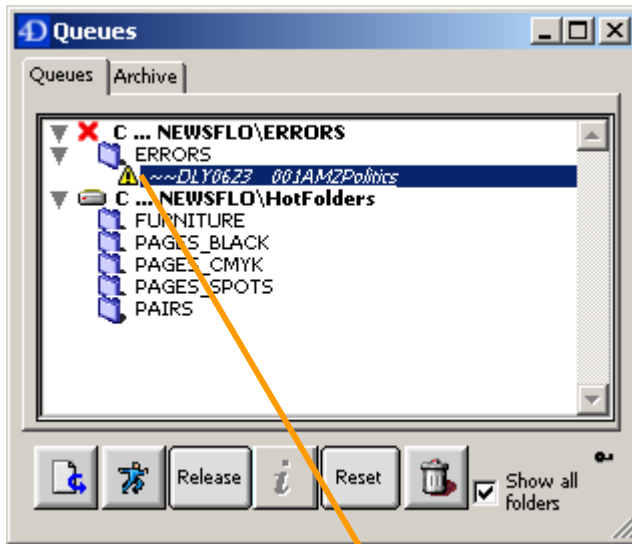
What is it used for?

PrePage-it Client is the main application used by operators for day-to-day management of jobs, as shown next:

- see list of jobs being RIPped on a per-queue basis in the **Queues** window

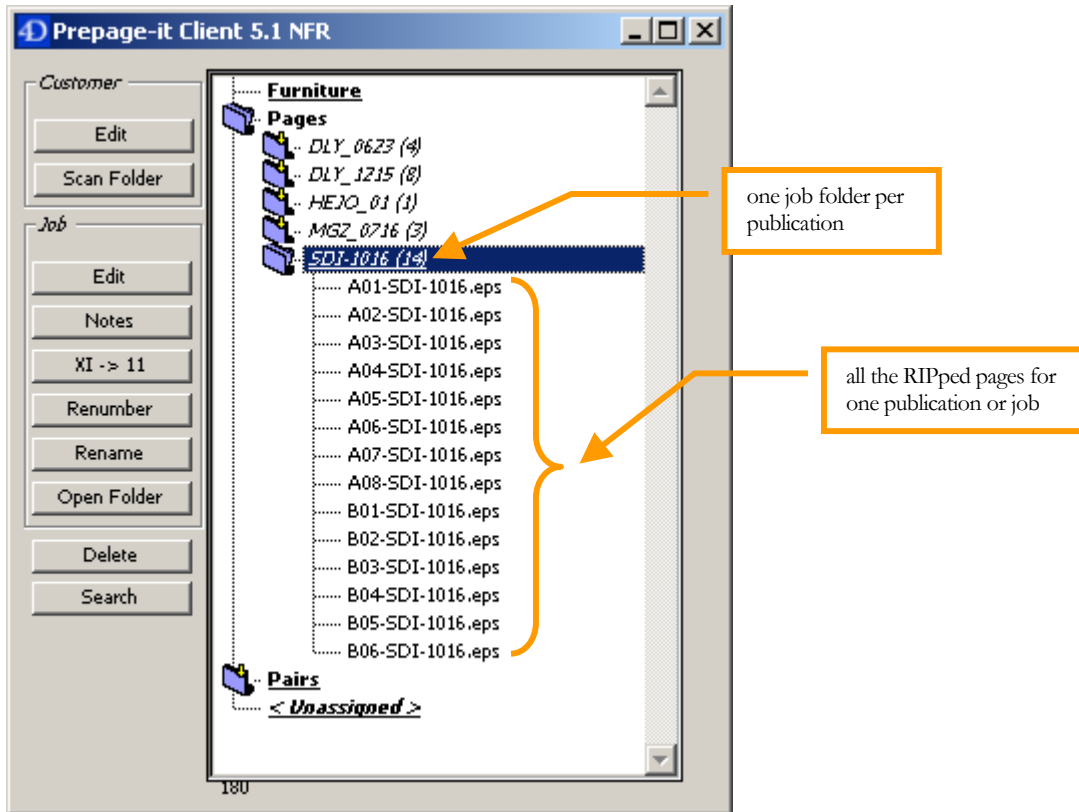


- see list of files in error – double-click on an error to see a more detailed message





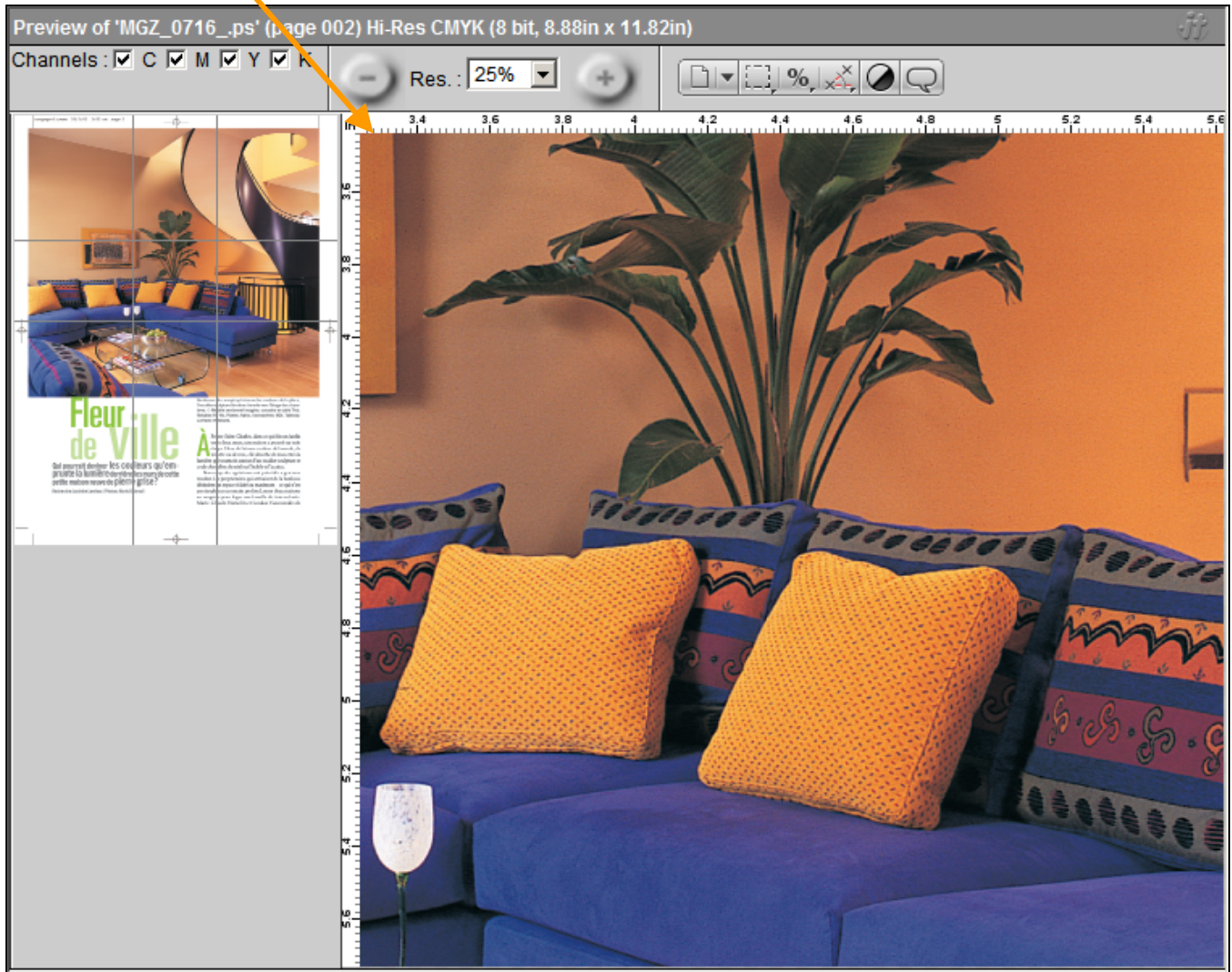
- see list of RIPped jobs, organized by job folder



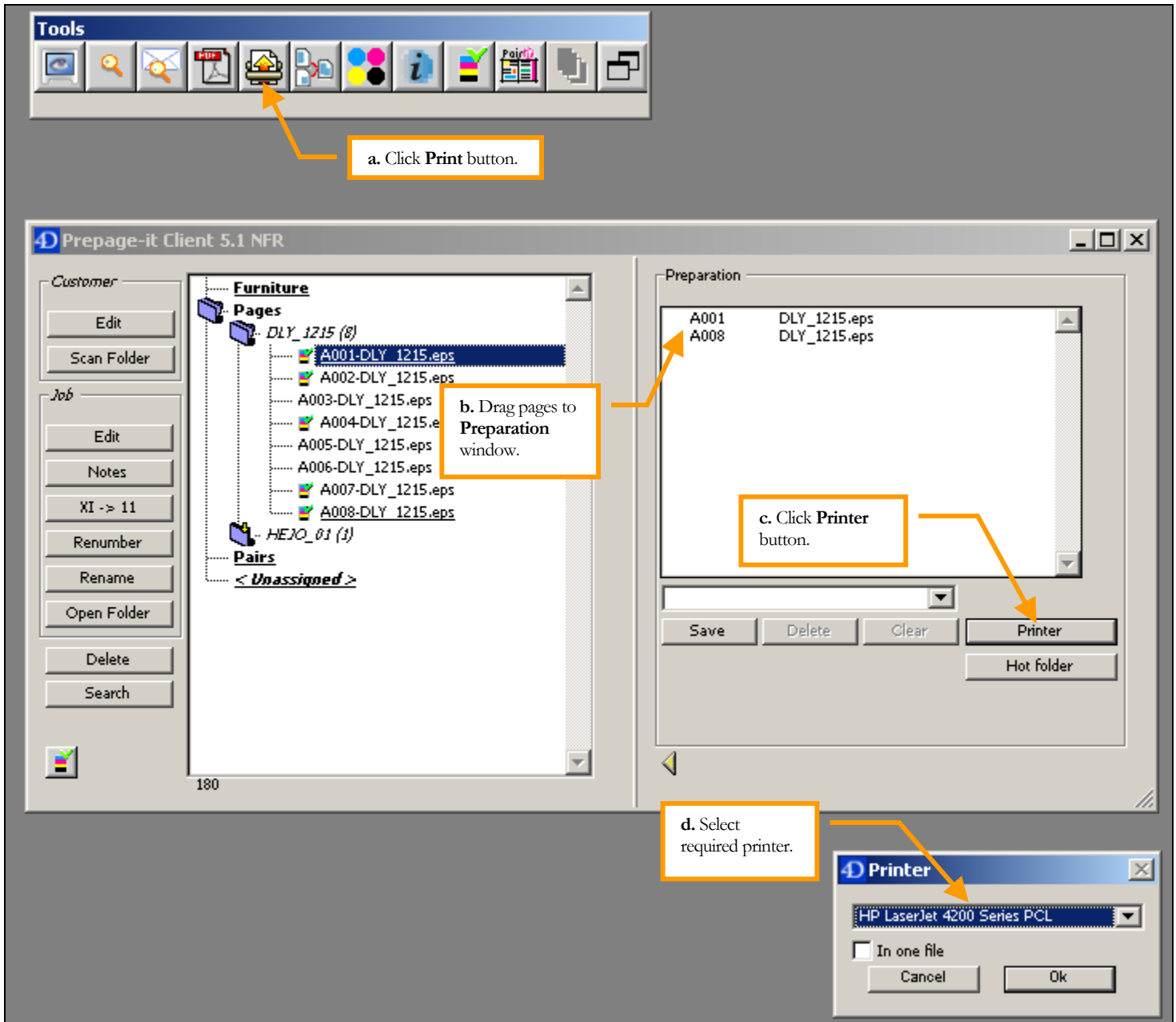
- see **low-res Preview** of RIPped pages by clicking **Preview** toolbar button



- see **View-it hi-res softproofs** of RIPped pages by clicking **Softproofing** toolbar button



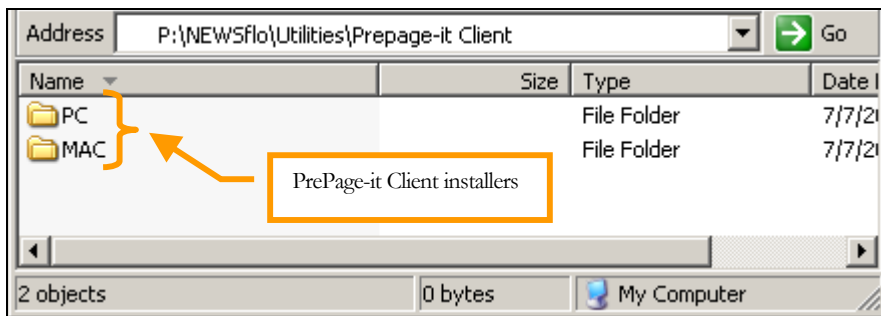
- print proofs of RIPped jobs via the **Print** toolbar button



- gives you access to **Publication Planner** and **Pair-it Monitor** (explained in section [Publication Planner / Pair-it Monitor](#) on p.29)

## Client Installation

- use installers located in NEWSflo default folder: NEWSflo\Utilities\PrePage-it Client (select Mac or PC installer)



### Note

It is the NEWSflo Installer that copies the Mac/PC Client installers to the NEWSflo default folder shown above.

- refer to *PrePage-it Client 5.1 Installation Guide* for installation procedure

## Publication Planner / Pair-it Monitor

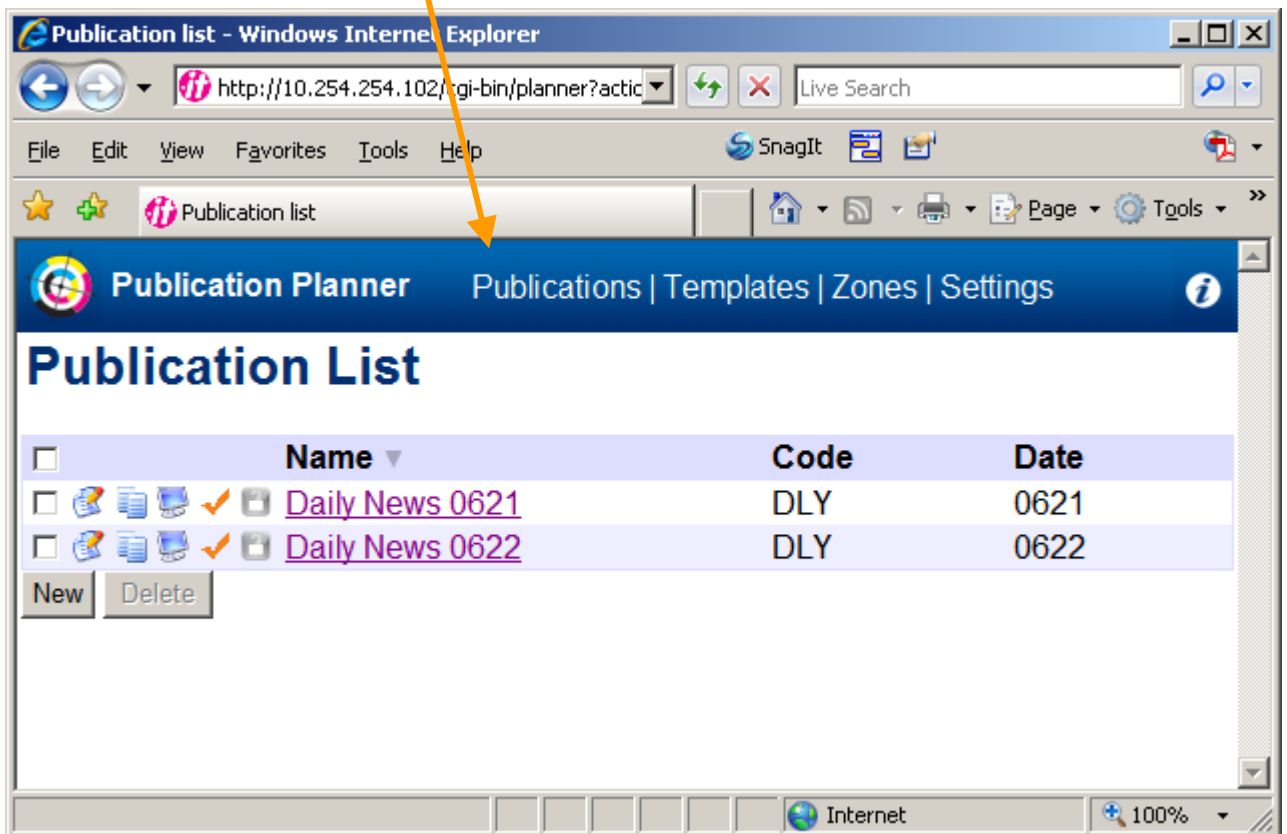
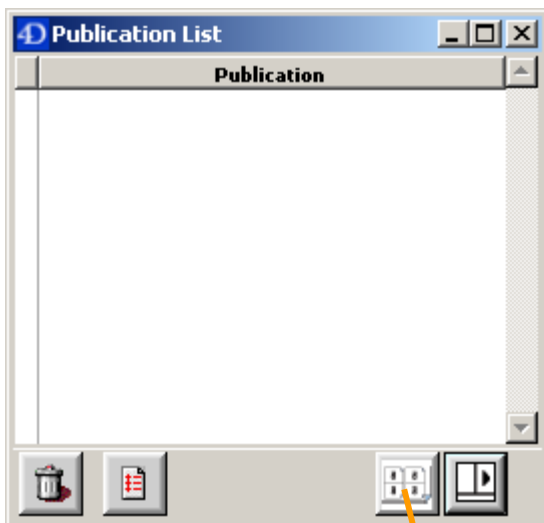
The Publication Planner and Pair-it Monitor modules is where you define your publications, activate them in order to start pairing up the pages, and monitor their progress until the final output to CTP.

### Publication Planner

The Publication Planner is where you define publications:

- *choose publication type* (Broadsheet, Tabloid, Quarterfold, etc.)?
- *how many pages and how will they be paired up?*
- *how many sections?*
- *if required: specify color space of each page, double-trucks, zones or other properties?*

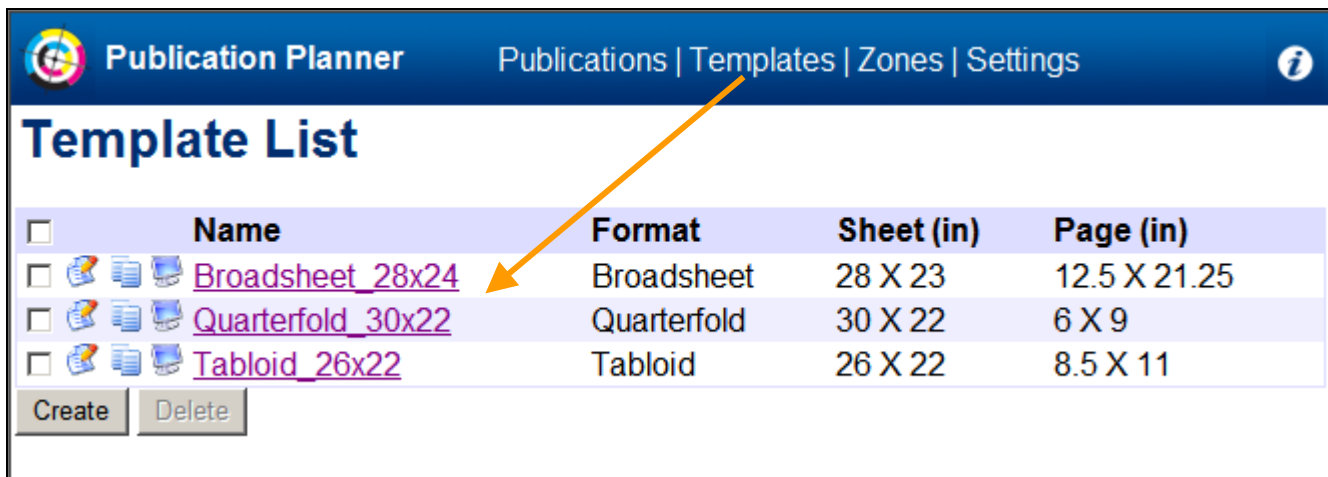
Launch the Planner by clicking the **Web Planner** button. It will open in your default web browser.



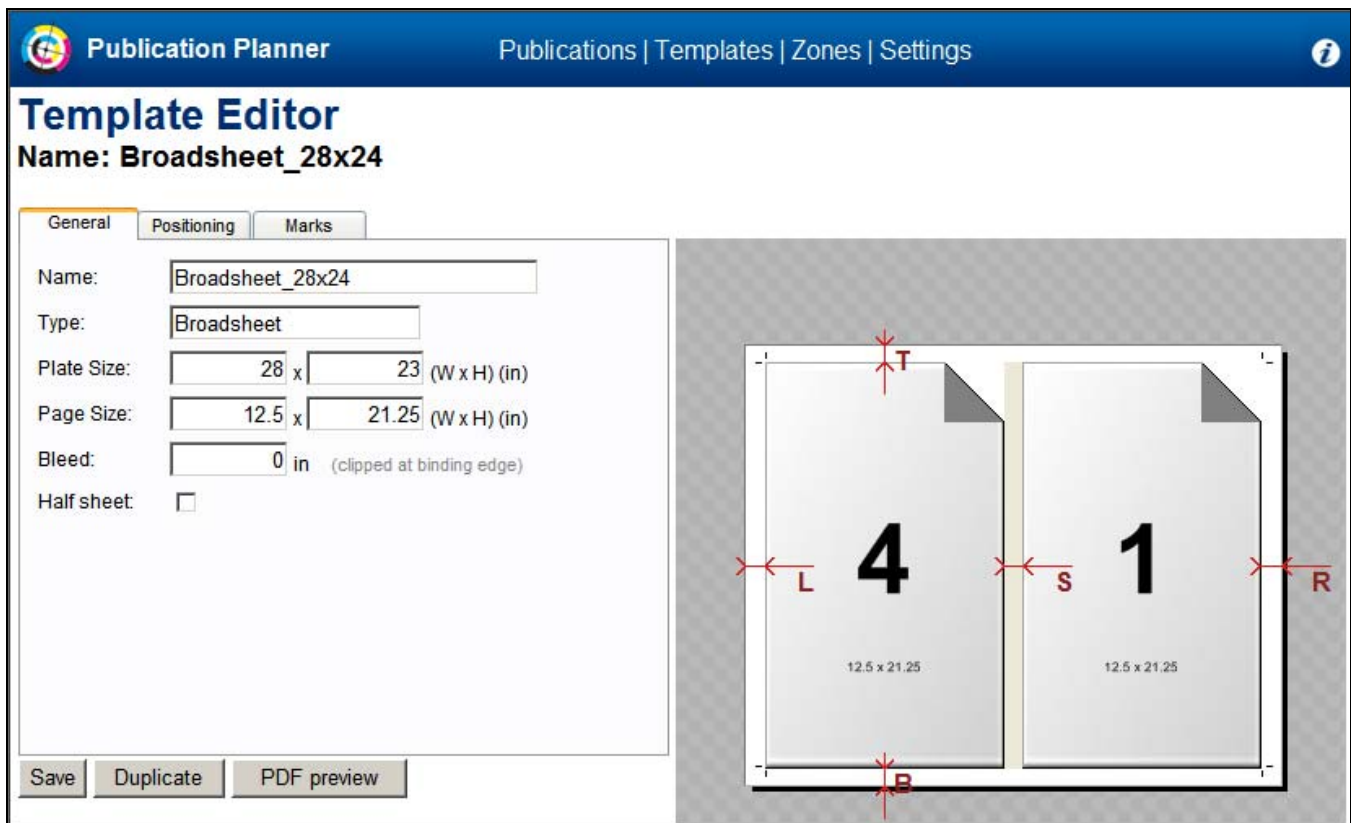
Refer to *NEWSflo Operator QuickStart* for basic instructions about using the Planner or the *Publication Planner User Guide* for a detailed user guide.

#### Planner Templates

- Publications are based on templates which have been pre-defined in the **Template Editor**, typically at least one template per publication type (Broadsheet, Tabloid, etc.).



- A template is defined by providing information regarding **Plate Size**, **Page Size**, **Margins/Gutters** and **Furniture/Marks**:



## Pair-it Monitor

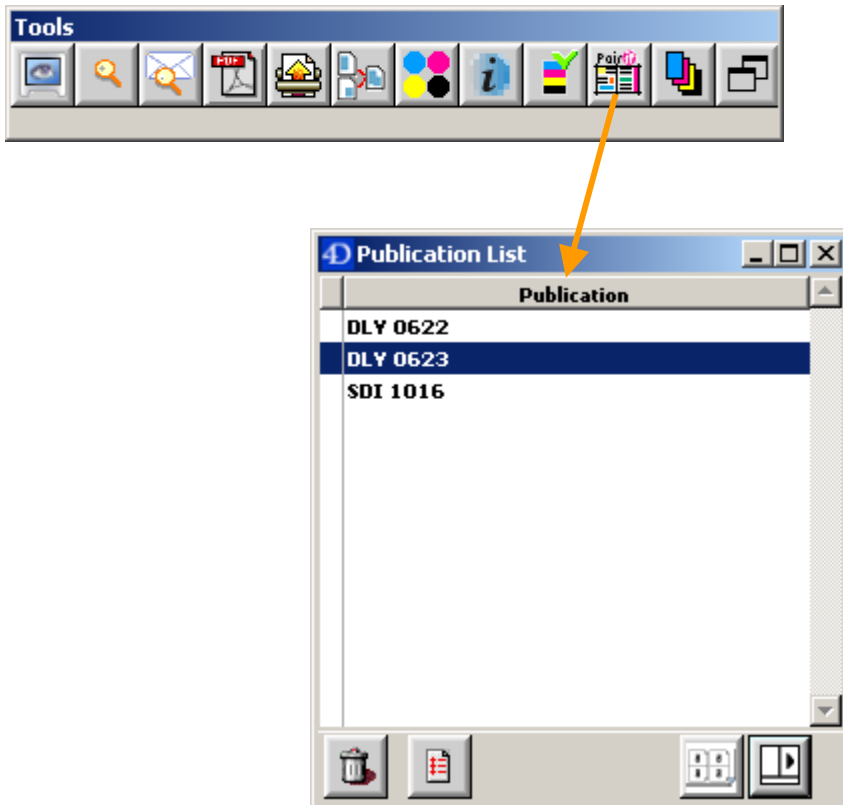
The **Pair-it Monitor** module is used:

- primarily to monitor the progress of paired pages and to do the final output to CTP

- to create/edit **Pair-it Preference Sets**
- in the full Pair-it version, to specify options such as:
  - Flop/Rotation of specific plates (e.g. Yellow Flop)
  - Black Delay (outputting CMY first, then Black text later on in the process)

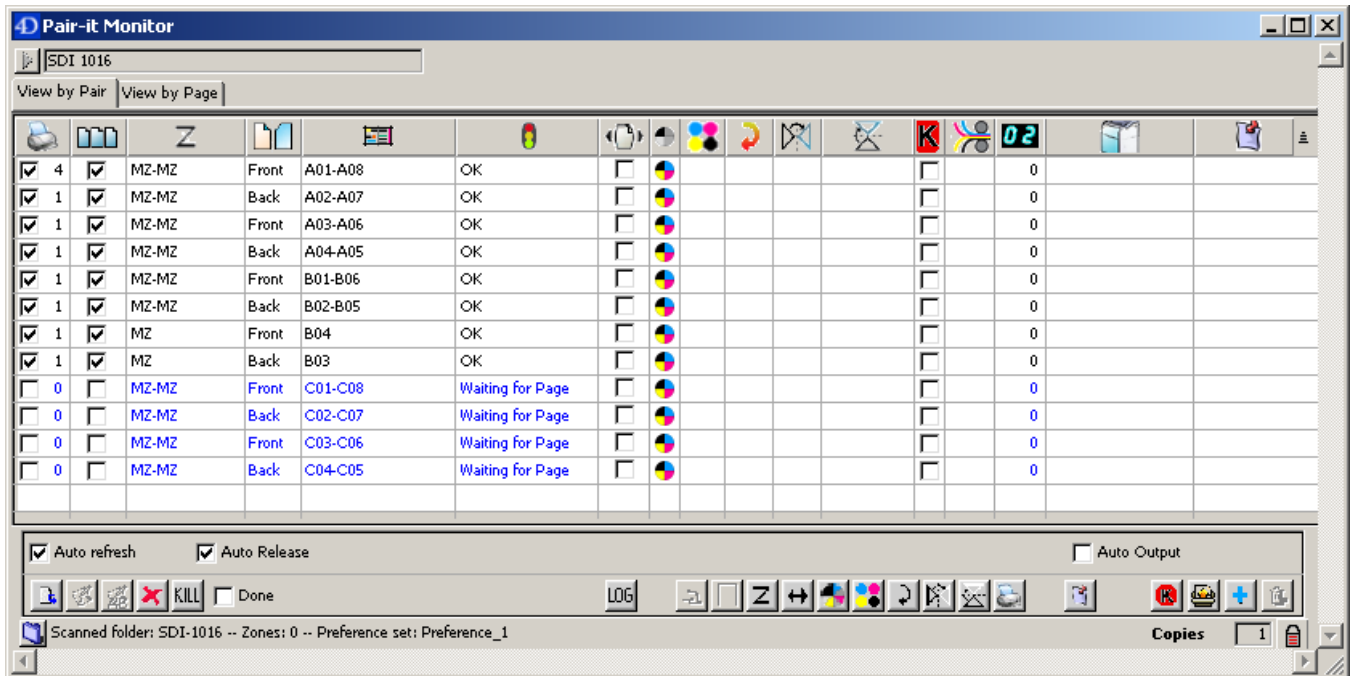
Monitoring the page pairing

- if **Pair-it's Publication List** window is not visible, click the **Pair-it** toolbar button to display it

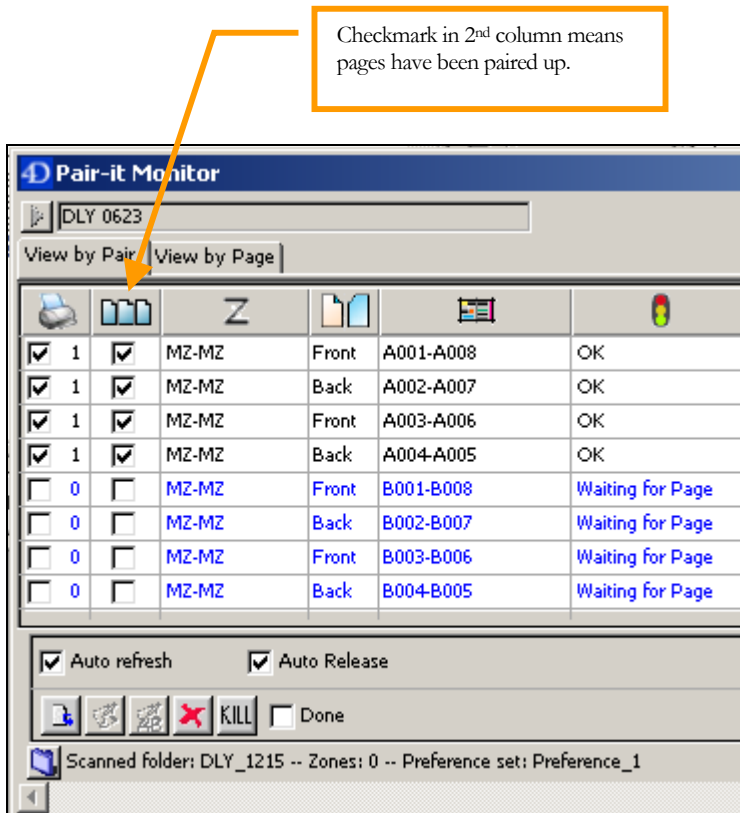
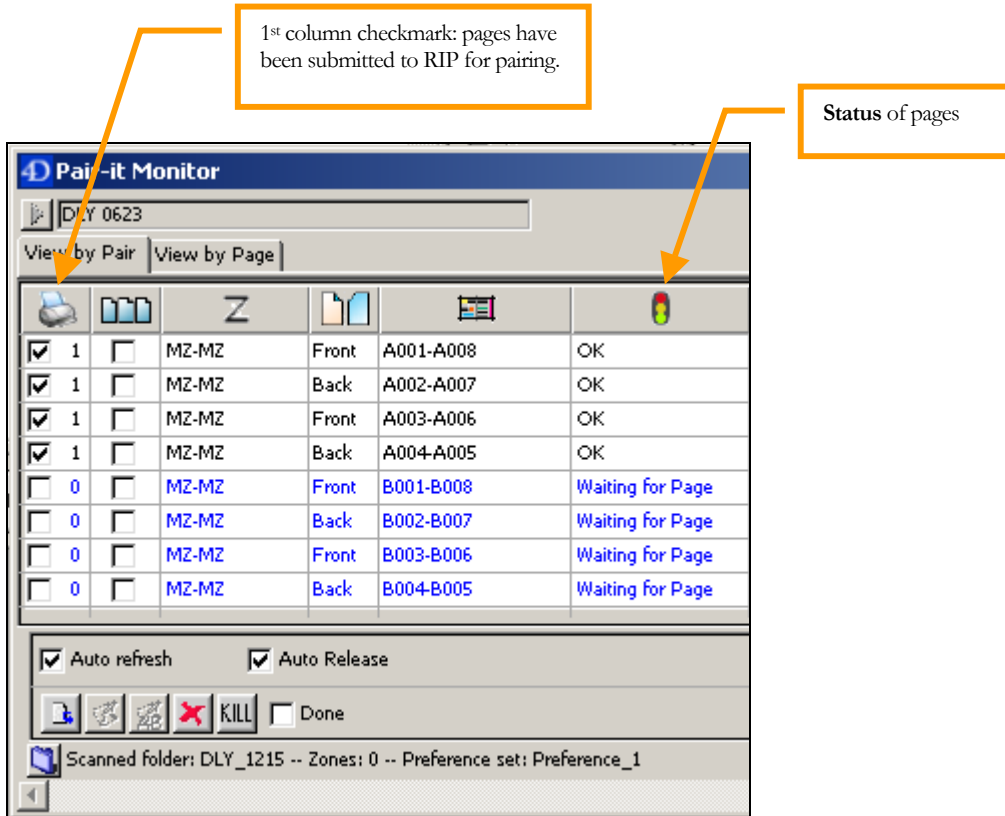





- double-click a publication (e.g. SDI 1016) to display the **Pair-it Monitor** window



- view progress of page pairing:
  - **Status** column: displays “OK” for the RIPped pages it has detected and “Waiting for Page” for pages not yet detected (i.e. not yet RIPped)
  - **1st column checkmark**: signifies that these pages have been submitted to the RIP to be paired up
  - **2<sup>nd</sup> column checkmark**: signifies that the page-pairing is complete

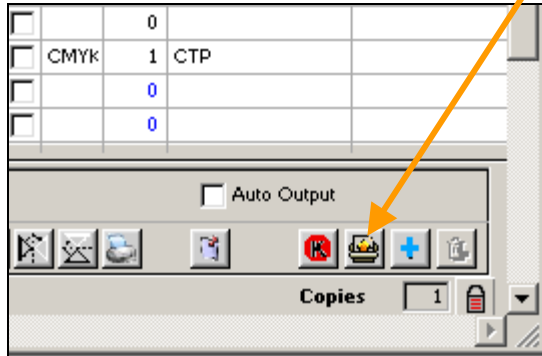


- softproof paired pages just like you softproof single pages (they must have a checkmark in the 2<sup>nd</sup> column):
  - i select one or more pairs in the **Pair-it Monitor**
  - ii click the **Softproofing** toolbar button  to see the **View-it hi-res softproof** of the RIPped pair

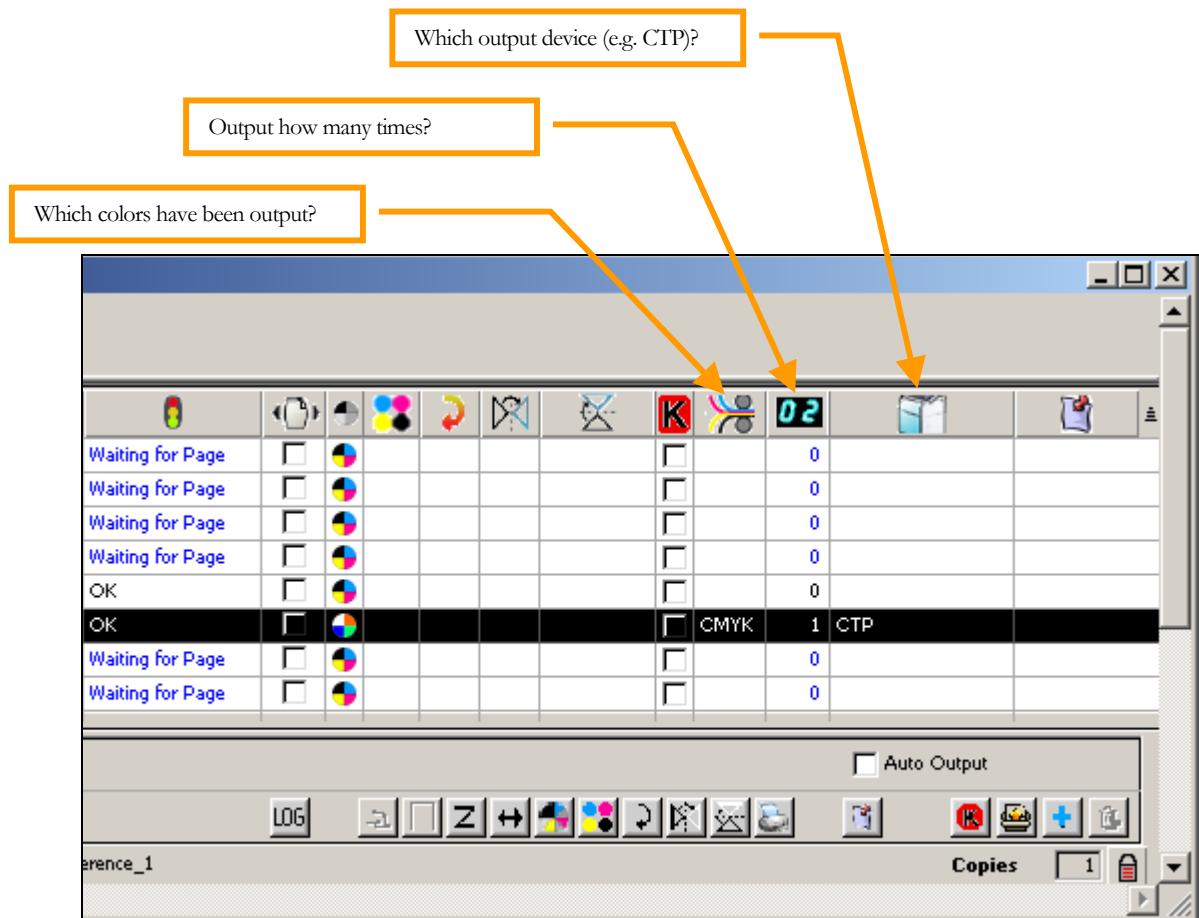


- output assembled pairs (they must have a checkmark in the 2<sup>nd</sup> column) to your CTP:
  - i select one or more pairs in the **Pair-it Monitor**

- ii click the **Output Plates** toolbar button  (located at the bottom right of the **Pair-it Monitor** window)




- after a pair has been output, verify:
  - which colors plates have been output?
  - number of times they have been output?
  - to which output device was it sent?

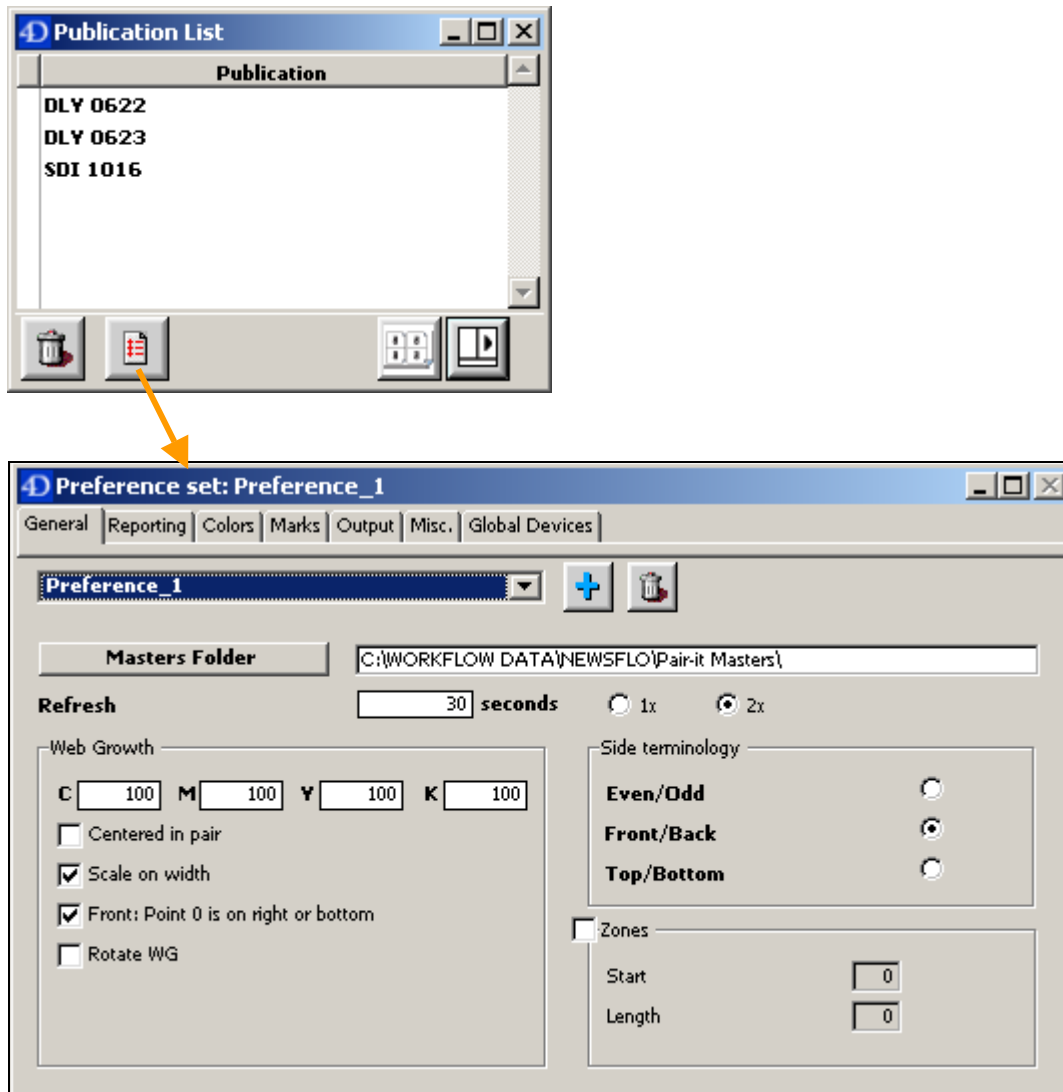


## Pair-it Preference Sets

**Preference Sets** are where you configure a number of factors about how you want your pages to be paired up and output, including:

- level of automation (**Auto Refresh** / **Auto Release** / **Auto Output**)
- filenaming of pairs
- slug lines
- web growth
- numerous output options

Open the **Preference Set** dialog box by clicking  :



### Note

Refer to *Pair-it User Guide* to know how to configure a Preference Set and for details on the numerous preference options.

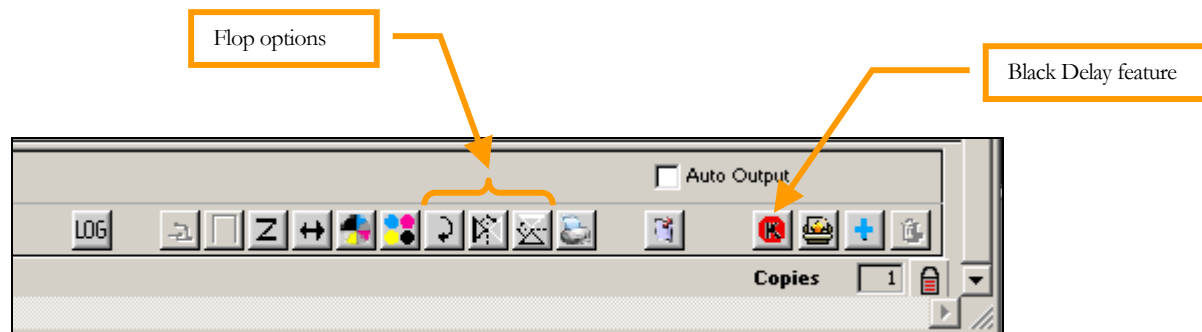
After you define a publication in the Planner, you enable the publication with a suitable Preference Set.

- in many workflows, one Preference Set is sufficient
- NEWSflo 2008 comes pre-configured with one Preference Set called **Preference\_1** – if required, more can be added



### Specifying more options (e.g. Flop, Black Delay)

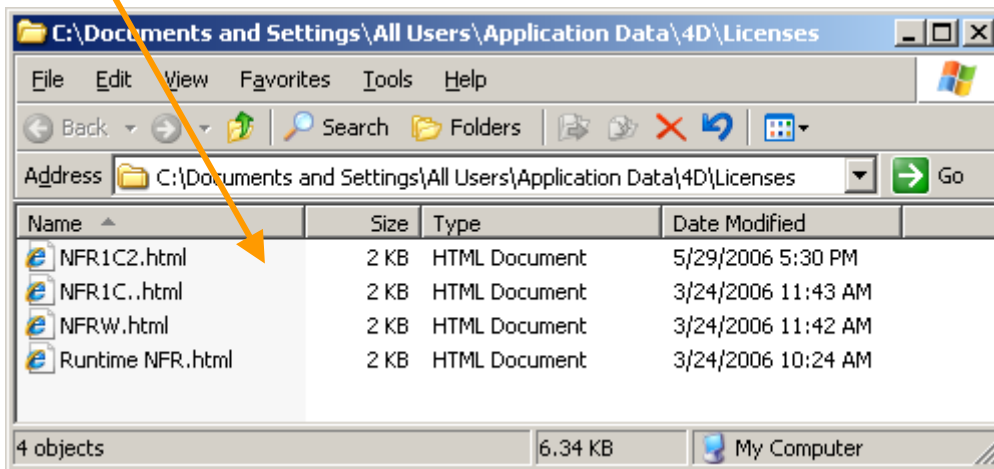
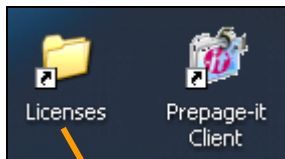
You can specify additional options in the **Pair-it Monitor** toolbar:



## 4D Licenses

In addition to the Polkadots dongle license, the PrePage-it Client requires an additional separate license, called a **4D License**. This license is only required on the server machine where the PrePage-it Client Engine (i.e. the server application) is installed.

- temporary NFR licenses are automatically installed by the NEWSflo Installer and copied to a folder on the server's desktop



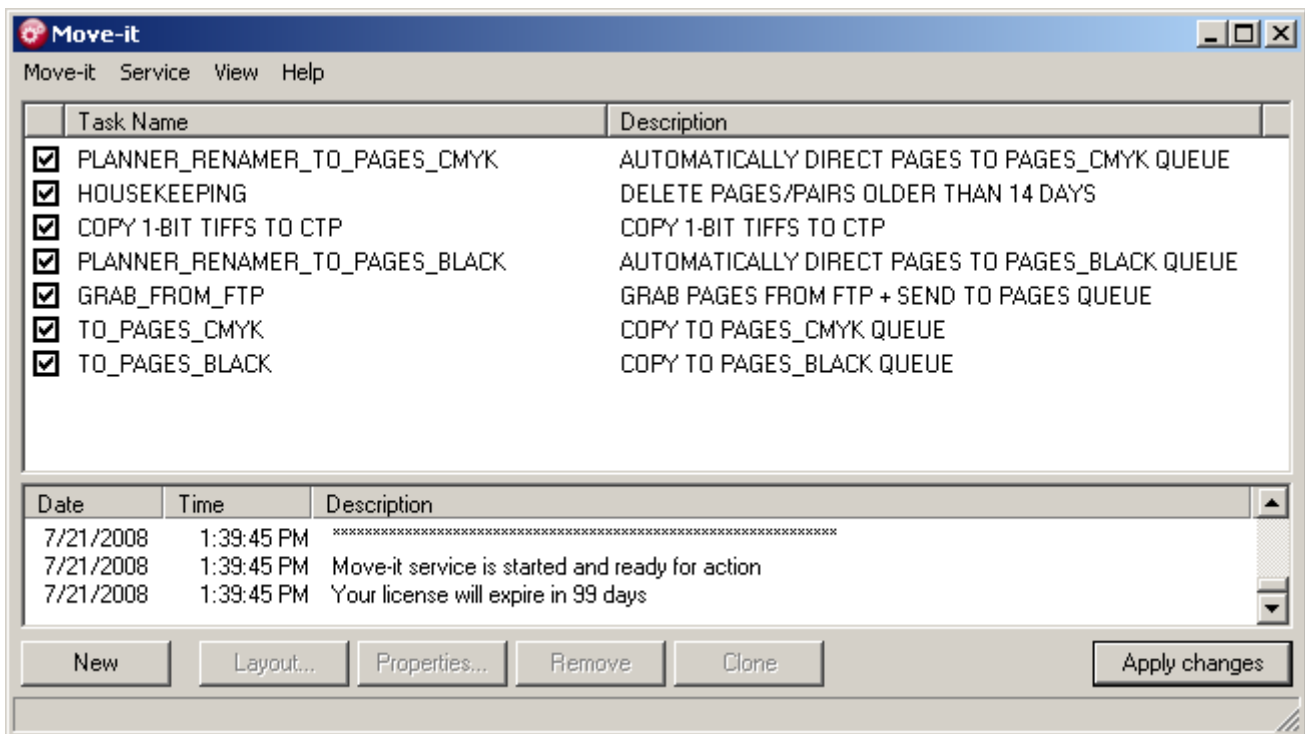
- when you are provided with permanent 4D license files, you need to:
  - copy the permanent 4D license files to the **Licenses** folder on your desktop
  - delete all the temporary NFR files from this folder

# Move-it

---

Move-it lets you set up *tasks* (also called *workflows*) which need to be performed automatically.

Some typical NEWSflo tasks/workflows are shown below:



- ☒ TO\_PAGES\_CMYK
- ☒ TO\_PAGES\_BLACK

- TO\_PAGES\_BLACK/CMYK: Renames page files submitted by users to a format acceptable by NEWSflo and copies them a PrePage-it PAGES\_BLACK/CMYK queue.

- ☒ GRAB\_FROM\_FTP

- GRAB\_FROM\_FTP: Takes page files submitted by users to an FTP folder, renames them if necessary and copies them to the specified PrePage-it queue.



- ☒ PLANNER\_RENAMER\_TO\_PAGES\_CMYK
- ☒ PLANNER\_RENAMER\_TO\_PAGES\_BLACK

- PLANNER\_RENAMER: Lets you define a setup where users can submit all page files to a single hotfolder:
  - typically 2 or 3 Move-it tasks monitor this hotfolder, but only one will pick up the file and send it to the appropriate PrePage-it queue
  - which Move-it task picks up the file (and thus which PrePage-it queue it is sent to) depends on the color space specified for that page in the Publication Planner

#### Note

How to setup the Planner Renamer workflow (in Move-it v.1.9.8) is described in detail in a separate document called the *Planner Renamer v1.9.8 Setup*. If using Move 2.x, it is explained in the *Move-it 2.x QuickStart Guide*.

- ☒ COPY 1-BIT TIFFS TO CTP

- COPY 1-BIT TIFFS TO CTP: Copies 1-bit TIFFs to a Tiff Pusher for output on a CTP, which liberates the Pair-it application so that it can continue pairing pages.

- ☒ HOUSEKEEPING

- HOUSEKEEPING: After a specified number of days, deletes files that are no longer necessary, thus preventing the hard disk from becoming filled.



**Polkadots Software Inc.**

2501 Dollard  
Montreal, Qc, H8N 1S2, Canada  
Phone (514) 595-6866  
Fax (514) 595-6012  
<http://www.polkadots.ca/>